

DAHER



TBM
960

INTERIOR
GUIDE

INTRODUCING

THE TBM 960 PRESTIGE CABIN

The stylish Prestige cabin elevates the TBM 960's comfort for both pilots and passengers in this newest member of Daher's TBM very fast turboprop aircraft family.

Its new seats keep everyone relaxed – even on long-distance flights. Their top grain leather and ultra-suede ribbon is further detailed by the stitching on armrests.

State-of-art thermal insulation, combined with a touchscreen-activated enhanced environmental control system, creates a welcoming living space. Electrically dimmable windows and LED strip lights integrated in the cabin's overhead ceiling panel provide an enlightened ambiance that is controlled by touchscreen.

A host of amenities are provided in the Prestige cabin: a redesigned folding table with additional fixed sides, 14/24 Volt power outlets with USB and USB-C ports for mobile devices, along with cupholders and headset holders for each passenger.

Use this guide to envision the Prestige cabin with color harmonies and customization possibilities that reflect a highly individual sense of style.

Welcome the world of Daher's TBM 960!





PRESTIGE

CONCEIVED FOR THE MOST DISCERNING TRAVELERS

IMPROVED COMFORT

- New seats, designed in cooperation with an ergonomist
- New environmental system for cabin pressurization
- Extended large storage cabinet with two USB-A ports and one 115-Volt outlet

PASSENGERS COMFORT DISPLAY

- Cabin lighting control for the overhead ceiling panel's LED strip lights, and for the cargo area
- Cabin temperature control

ELECTRONICALLY DIMMABLE WINDOWS



UNIQUE ONBOARD EXPERIENCE

CABIN LIGHTING AMBIANCE

- New individual reading lights
- LED strip lights, integrated along both sides of the cabin's overhead ceiling panel

CONNECTIVITY

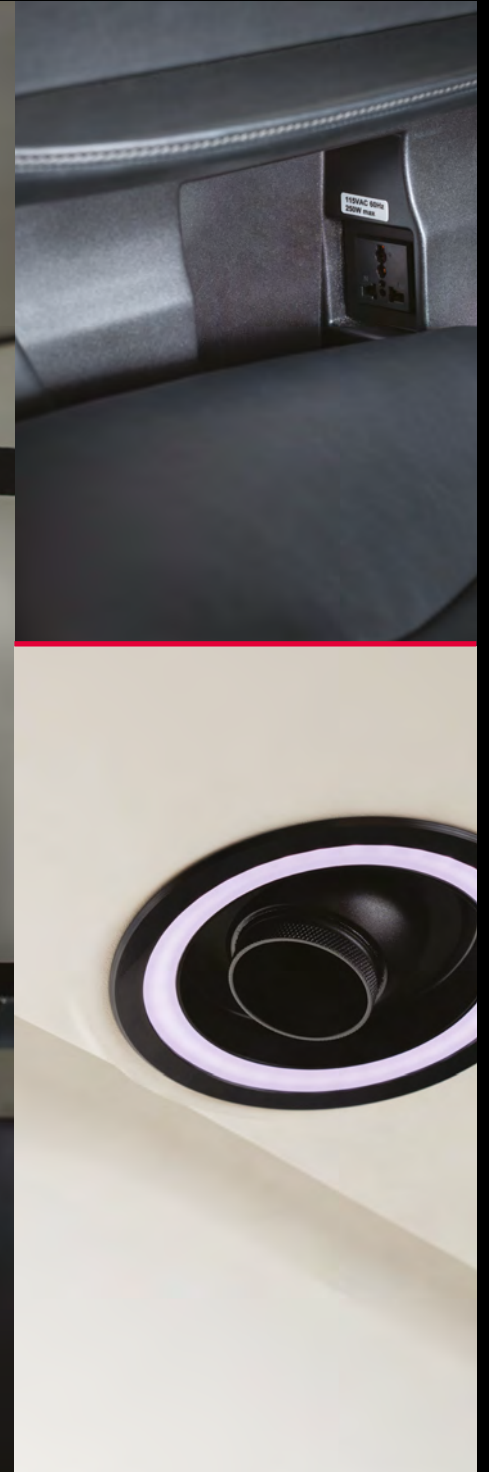
- A total of five USB-A and USB-C ports
- One 115-Volt power plug

CABIN AMENITIES

- U.S. cup holders for all seats in all configurations
- iPad storage for passengers and the pilot
- Headset plugs for each seat
- Individual headset holders

NEW ENVIRONMENTAL CABIN SYSTEM FOR PRESSURIZATION

- The TBM 960's new environmental system for cabin pressurization ensures improved comfort for all everyone aboard
- The Passenger Comfort Display (PCD) enables fingertip adjustments for cabin temperature and ambient light





EXCLUSIVE

HARMONIES

INCLUDED IN THE ENHANCED OPERATIONAL PACKAGE

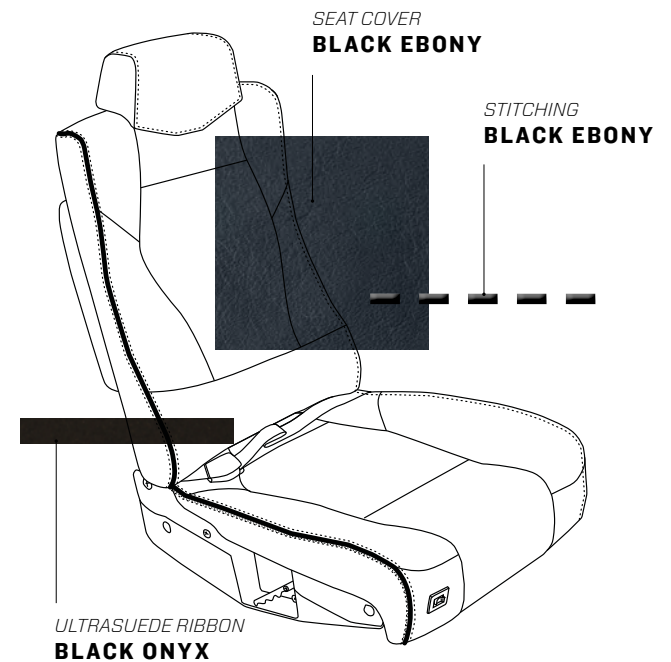


BLACKFRIARS

Seat cover: **BLACK EBONY**
 Ultrasuede ribbon: **BLACK ONYX**
 Stitching: **BLACK EBONY**
 Seatbelt: **BLACK JET**
 Upper side panel: **WHITE SAND**
 Lower side panel: **BLACK EBONY**
 Carpet: **CHARCOAL BLACK**
 Table finish: **CARBON**
 Metal finish: **FLAT BLACK**

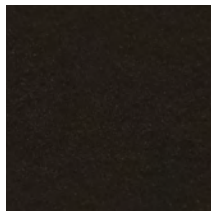
"SEVEN BLACK FRIARS SITTING BACK TO BACK FISHED FROM THE BRIDGE FOR A PIKE OR A JACK. THE FIRST CAUGHT A TIDDLER, THE SECOND CAUGHT A CRAB, THE THIRD CAUGHT A WINKLE, THE FOURTH CAUGHT A DAB, THE FIFTH CAUGHT A TADPOLE, THE SIXTH CAUGHT AN EEL, AND THE SEVENTH ONE CAUGHT AN OLD CART-WHEEL.."

ELEANOR FARJEON

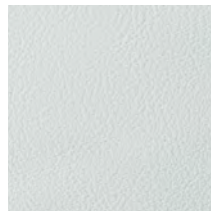




SEAT COVER
BLACK EBONY



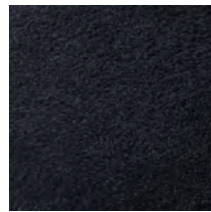
ULTRASUEDE RIBBON
BLACK ONYX



UPPER SIDE PANEL
WHITE SAND



LOWER SIDE PANEL
BLACK EBONY



CARPET
CHARCOAL BLACK

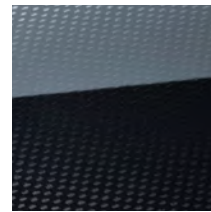
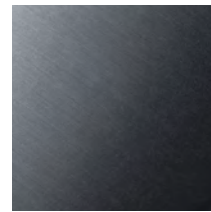


TABLE FINISH
CARBON



METAL FINISH
FLAT BLACK

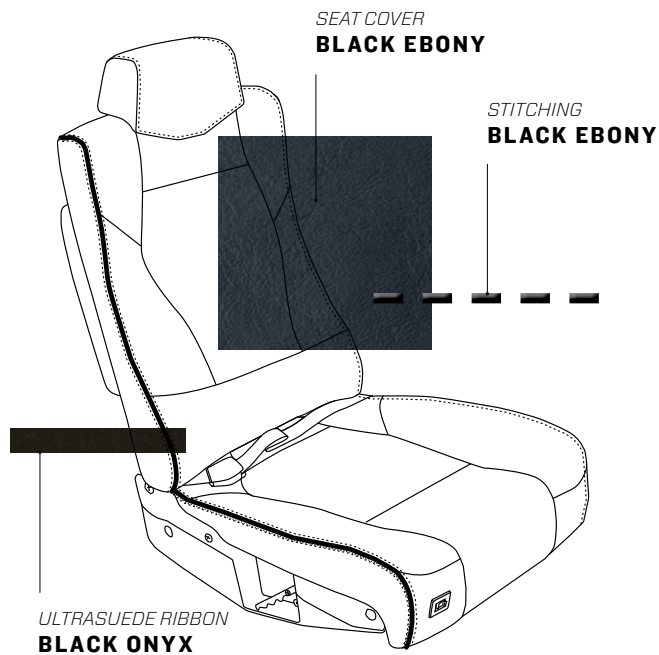


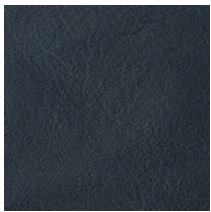
LONDON

Seat cover: **BLACK EBONY**
 Ultrasuede ribbon: **BLACK ONYX**
 Stitching: **BLACK EBONY**
 Seatbelt: **BLACK JET**
 Upper side panel: **LIGHT SAND**
 Lower side panel: **BEIGE GRAY**
 Carpet: **CHARCOAL BLACK**
 Table finish: **CARBON**
 Metal finish: **FLAT BLACK**

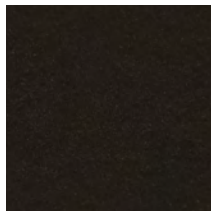
"LONDON, MY BEAUTIFUL, IT IS NOT THE SUNSET NOR THE PALE GREEN SKY SHIMMERING THROUGH THE CURTAIN OF THE SILVER BIRCH, NOR THE QUIETNESS; IT IS NOT THE HOPPING OF BIRDS UPON THE LAWN, NOR THE DARKNESS STEALING OVER ALL THINGS THAT MOVES ME."

F. S. FLINT





SEAT COVER
BLACK EBONY



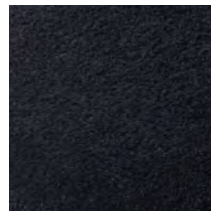
ULTRASUEDE RIBBON
BLACK ONYX



UPPER SIDE PANEL
LIGHT SAND



LOWER SIDE PANEL
BEIGE GRAY



CARPET
CHARCOAL BLACK

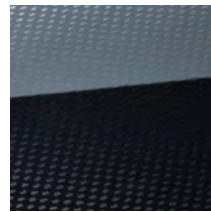
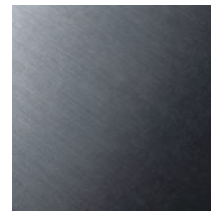
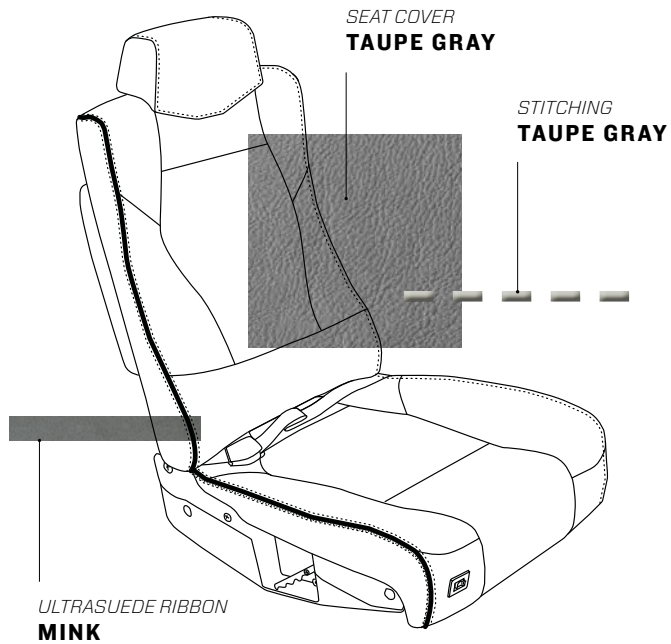


TABLE FINISH
CARBON



METAL FINISH
FLAT BLACK



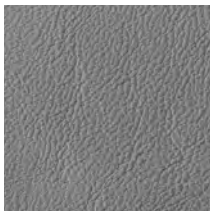
GOOSE BAY

Seat cover: **TAUPE GRAY**
 Ultrasuede ribbon: **MINK**
 Stitching: **TAUPE GRAY**
 Seatbelt: **CHROME GRAY**
 Upper side panel: **WHITE SAND**
 Lower side panel: **TAUPE GRAY**
 Carpet: **TAUPE GRAY**
 Table finish: **SAPELLI MAT**
 Metal finish: **BRUSHED STAINLESS**

*"A KNIFE IN THIS SOIL THRUST THE CUTTING COLD
 EDGE BARELY DULLED AT THE YEAR'S ONE NOON;
 CELLED HERE BY MOUNTAINS, ENCIRCLED BY FROST
 LIVE MEN BY THE CHALLENGE OF WAR MADE BOLD."*

ROBERT RESOE

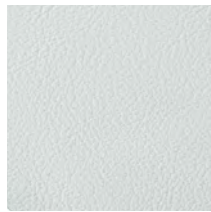




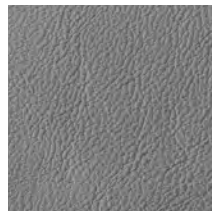
SEAT COVER
TAUPE GRAY



ULTRASUEDE RIBBON
MINK



UPPER SIDE PANEL
WHITE SAND



LOWER SIDE PANEL
TAUPE GRAY



CARPET
TAUPE GRAY

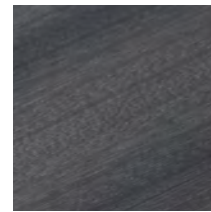


TABLE FINISH
SAPELLI MAT



METAL FINISH
BRUSHED STAINLESS

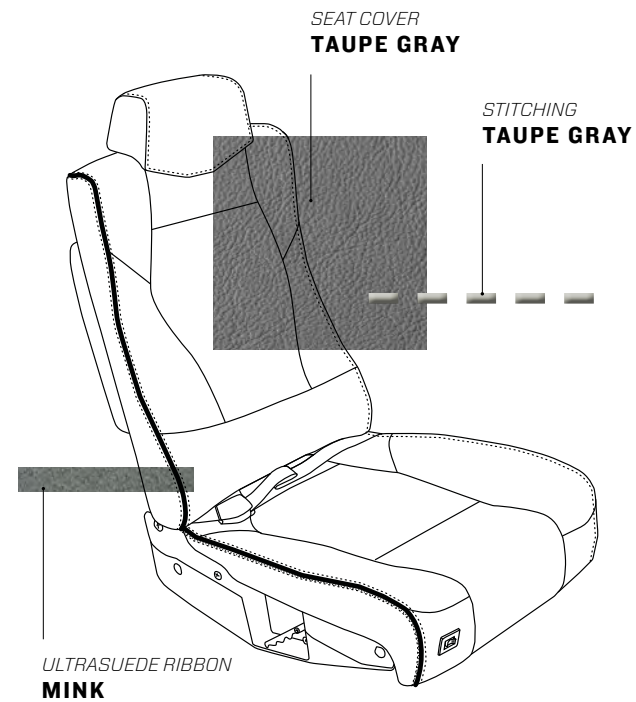


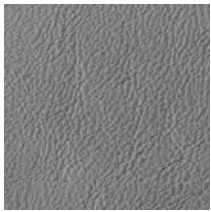
LABRADOR

Seat cover: **TAUPE GRAY**
 Ultrasuede ribbon: **MINK**
 Stitching: **TAUPE GRAY**
 Seatbelt: **CHROME GRAY**
 Upper side panel: **WHITE SAND**
 Lower side panel: **LIGHT SAND**
 Carpet: **TAUPE GRAY**
 Table finish: **SAPELLI MAT**
 Metal finish: **BRUSHED STAINLESS**

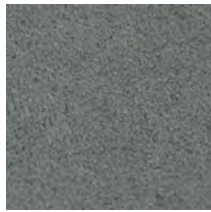
*"I SET OUT ONE NIGHT WHEN THE TIDE WAS LOW THERE
 WERE SIGNS IN THE SKY BUT I DID NOT KNOW I'D BE
 CAUGHT IN THE GRIP OF THE UNDERTOW DITCHED ON
 A BEACH WHERE THE SEA HATES TO GO WITH A CHILD
 IN MY ARMS AND A CHILL IN MY SOUL AND MY HEART
 THE SHAPE OF A BEGGING BOWL"*

LEONARD COHEN





SEAT COVER
TAUPE GRAY



ULTRASUEDE RIBBON
MINK



UPPER SIDE PANEL
WHITE SAND



LOWER SIDE PANEL
LIGHT SAND



CARPET
TAUPE GRAY

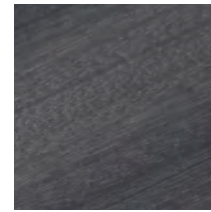


TABLE FINISH
SAPELLI MAT



METAL FINISH
BRUSHED STAINLESS

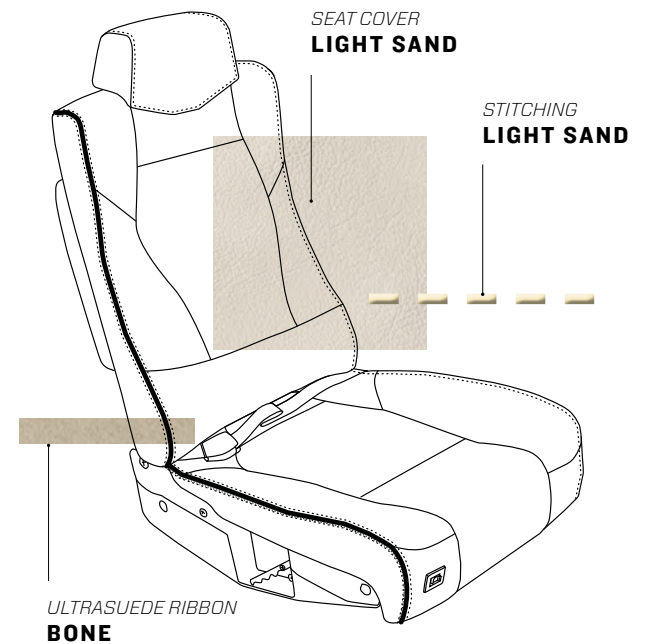


ATACAMA

Seat cover: **LIGHT SAND**
 Ultrasuede ribbon: **BONE**
 Stitching: **LIGHT SAND**
 Seatbelt: **SOFT MOON**
 Upper side panel: **WHITE SAND**
 Lower side panel: **LIGHT SAND**
 Carpet: **LIGHT BROWN**
 Table finish: **KOTO MAT**
 Metal finish: **BRUSHED STAINLESS**

*"THE DESERT OF ATACAMA SOARED OVER INFINITIES
 OF DESERTS TO BE THERE LIKE THE WIND FEEL IT PASS
 WHISTLING THROUGH THE LEAVES OF THE TREES
 LOOK AT IT BECOME TRANSPARENT FARAWAY AND
 JUST ACCOMPANIED BY THE WIND."*

RAÚL ZURITA

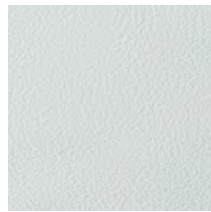




SEAT COVER
LIGHT SAND



ULTRASUEDE RIBBON
BONE



UPPER SIDE PANEL
WHITE SAND



LOWER SIDE PANEL
LIGHT SAND



CARPET
LIGHT BROWN

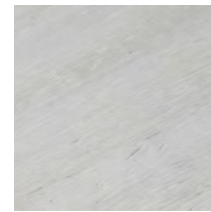
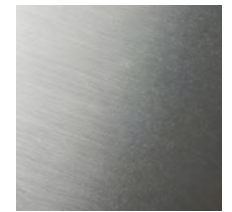


TABLE FINISH
KOTO MAT



METAL FINISH
BRUSHED STAINLESS

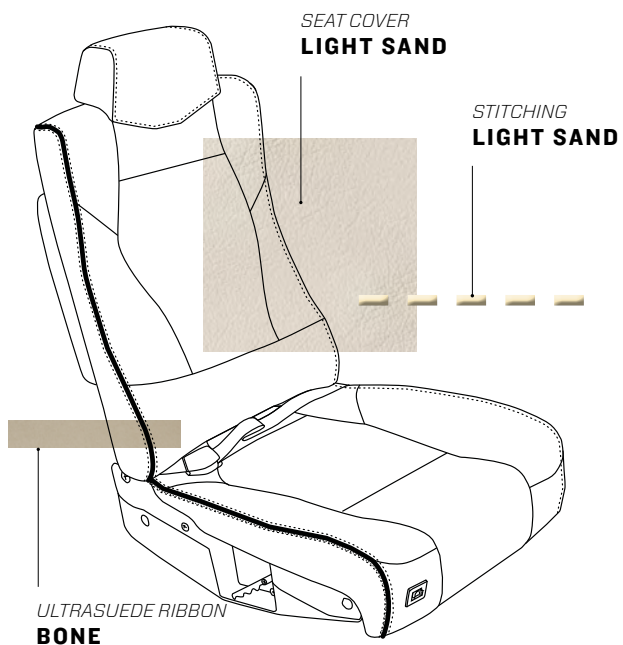


SAN PEDRO

Seat cover: **LIGHT SAND**
 Ultrasuede ribbon: **BONE**
 Stitching: **LIGHT SAND**
 Seatbelt: **SOFT MOON**
 Upper side panel: **WHITE SAND**
 Lower side panel: **LIGHT BROWN**
 Carpet: **LIGHT BROWN**
 Table finish: **GLOSSY WALNUT**
 Metal finish: **GOLD**

"HIGH ON ATACAMA AIR MASSES ROSE TO PASS EAST OVER THE HIGH PLATEAU GIFTING THE WINDWARD MOUNTAINS MISTS & MOISTURE DESCENDING HOTLY ON THE LEEWARD LANDS WHEREON THE EYES OF THE SALTY ONE ERUPTED IN OUTRAGED CLOUDS OF ASH"

NICK S.R

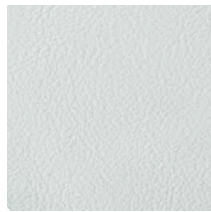




SEAT COVER
LIGHT SAND



ULTRASUEDE RIBBON
BONE



UPPER SIDE PANEL
WHITE SAND



LOWER SIDE PANEL
LIGHT BROWN



CARPET
LIGHT BROWN

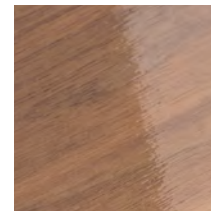
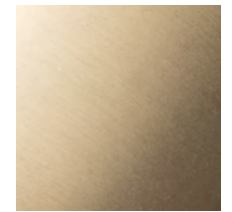
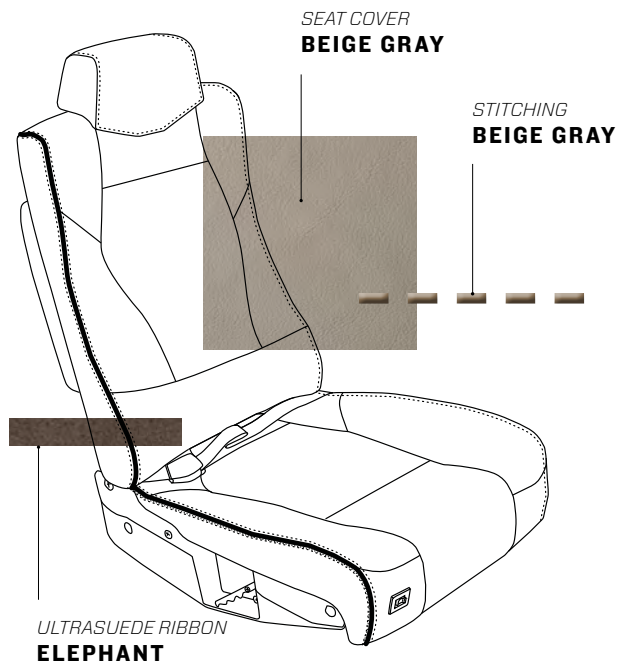


TABLE FINISH
GLOSSY WALNUT



METAL FINISH
GOLD



OSLO

Seat cover: **BEIGE GRAY**
 Ultrasuede ribbon: **ELEPHANT**
 Stitching: **BEIGE GRAY**
 Seatbelt: **OATMEAL**
 Upper side panel: **WHITE SAND**
 Lower side panel: **BEIGE GRAY**
 Carpet: **CHARCOAL BLACK**
 Table finish: **SAPELLI MAT**
 Metal finish: **BRUSHED STAINLESS**

*"THE GULLS ONCE CRYING NOW TUCKING THEIR BEAKS
 BENEATH THEIR COAT OF SMOOTH WEATHERED WINGS.
 AS I LOOK DOWN AT OSLO AS THE EVENING SETS IN,
 MY MIND VENTURES IN HISTORY'S IMAGINATION, I
 IMAGINED HOW THE INLET ONCE FELT CENTURIES
 GONE DID VIKINGS ROAR "PULL" IN THEIR ANCIENT
 TONGUE?"*

NA FIANNA "OSLO POEM"





SEAT COVER
BEIGE GRAY



ULTRASUEDE RIBBON
ELEPHANT



UPPER SIDE PANEL
WHITE SAND



LOWER SIDE PANEL
BEIGE GRAY



CARPET
LIGHT BROWN

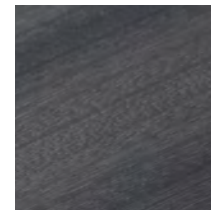


TABLE FINISH
SAPELLI MAT



METAL FINISH
BRUSHED STAINLESS

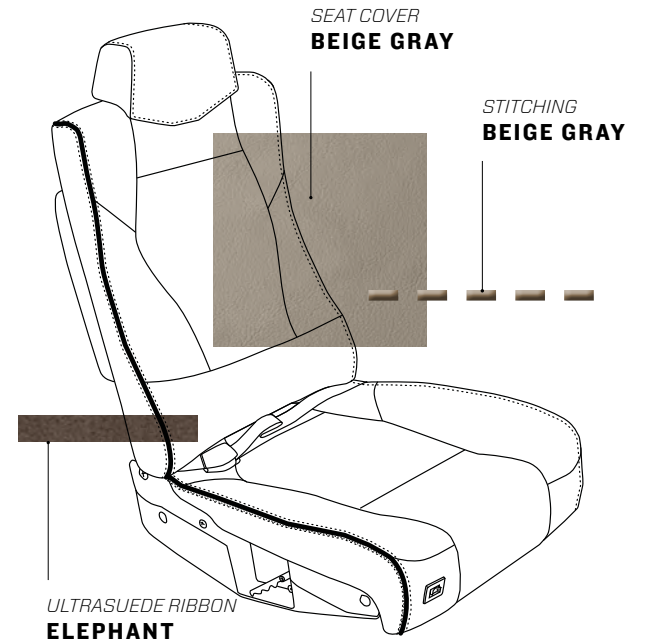


FJORD

Seat cover: **BEIGE GRAY**
 Ultrasuede ribbon: **ELEPHANT**
 Stitching: **BEIGE GRAY**
 Seatbelt: **OATMEAL**
 Upper side panel: **WHITE SAND**
 Lower side panel: **BLACK EBONY**
 Carpet: **CHARCOAL BLACK**
 Table finish: **CARBON**
 Metal finish: **BRUSHED STAINLESS**

*"THE AIR IS AS BREATHABLE AS CONCRETE THE TREES
 LIKE FENCES PROPPED AGAINST A WIND THAT KNOWS
 HUNGER THE SMALL FARMS BUNKERED DOWN IN
 THEIR GARTHS ON LAND WORKED LEAN AND SEEDED
 WITH STONE. YOU TELL ME THERE ARE WOLVES AND
 BEARS. I BELIEVE YOU."*

KATHLEEN JONES





SEAT COVER
BEIGE GRAY



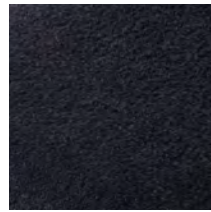
ULTRASUEDE RIBBON
ELEPHANT



UPPER SIDE PANEL
WHITE SAND



LOWER SIDE PANEL
BLACK EBONY



CARPET
CHARCOAL BLACK

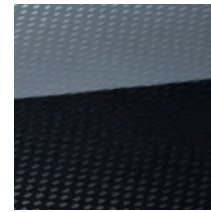
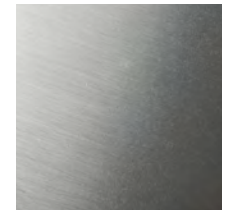


TABLE FINISH
CARBON



METAL FINISH
BRUSHED STAINLESS



PREMIUM

INTERIOR SELECTION

CREATE A UNIQUE CABIN HARMONY BY SELECTING OTHER MATERIAL AND SHADES

PREMIUM

MATERIAL SELECTION



LEATHER



CARPET

PREMIUM

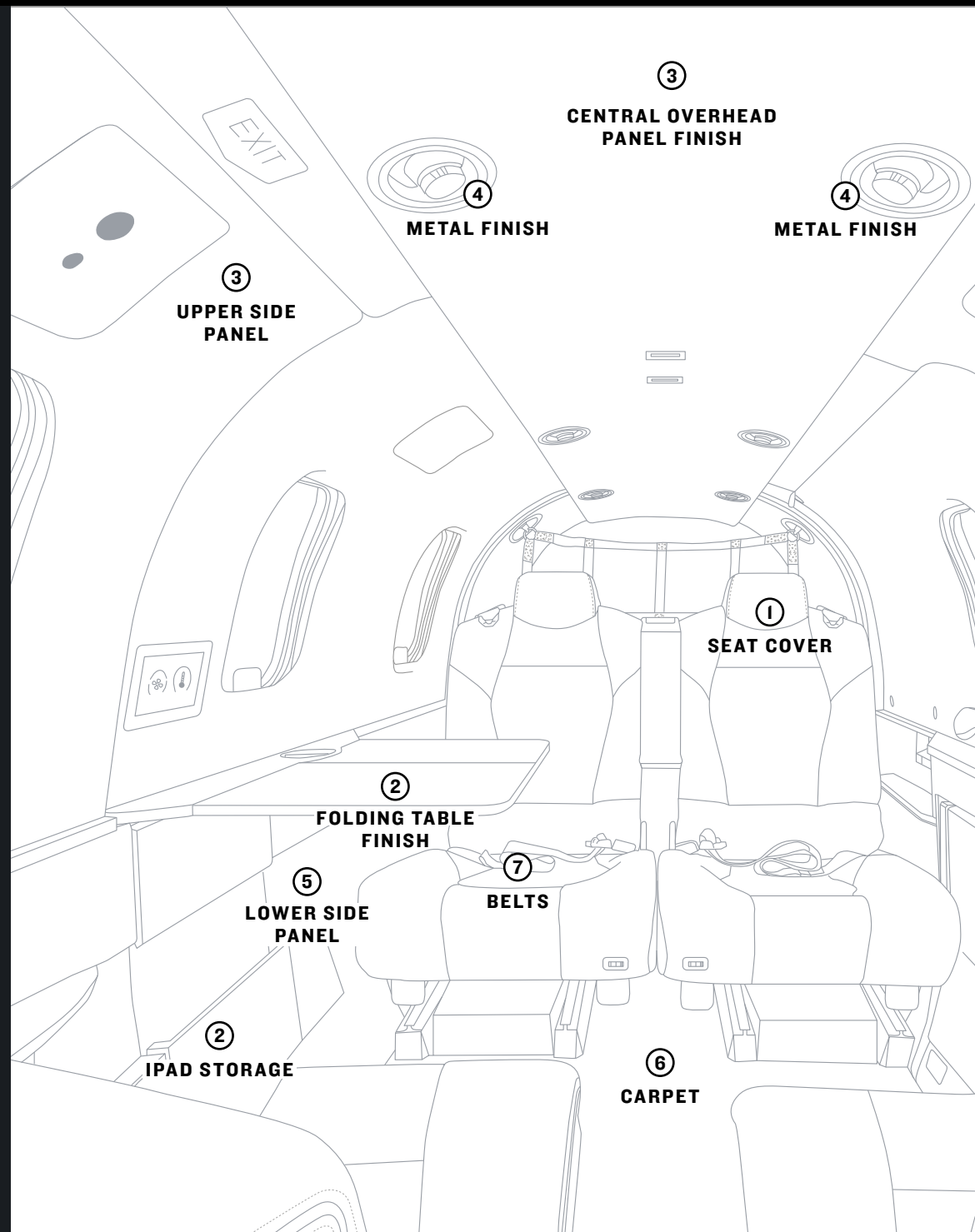
INTERIOR SELECTION

Identified on this page are the areas that can be customized in creating the TBM 960's interior. If customization is not specified, the seat base cover, safety belts and stitching are harmonized with the overall selection.

Software tools provide a highly accurate representation of how the new interior will look. These tools are available on the Daher TBM.aero website or through the Apple AppStore and the Android application on Google Play.

<http://www.tbm.aero/personalize-your-tbm/>

See page 36 for more stitching possibilities.



THE SEAT FAIRING COLOR MATCHES THE SEAT LEATHER SHADE, EXCEPT FOR THE REAR SEAT HULL - WHICH HAS A CARBON COVER FOR PRACTICAL PURPOSES.

THE DELUXE WOOD OR CARBON TRIM INTERIOR PACKAGE (VALUED AT \$8,600) ENABLES THE ADDITION OF A WOOD OR CARBON FINISH ON THE CENTRAL UPPER PANEL, ALONG WITH THE TABLE COVER AND COVERS OF THE STORAGE CABINET DOORS.

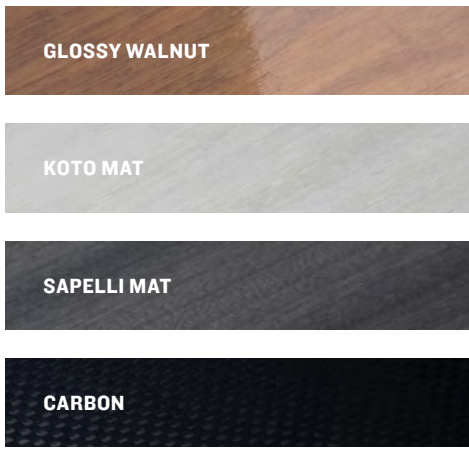
③
UPPER SIDE PANEL

②
FIXED TABLE FINISH

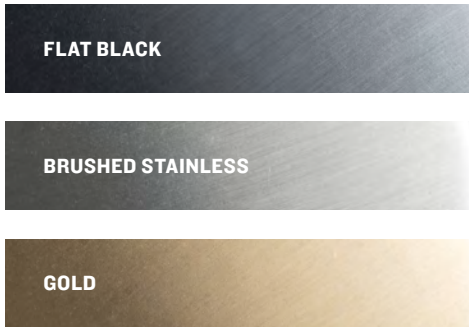
STANDARD LEATHER SHADES ① ③ ⑤



WOOD & CARBON TRIM ②



METAL TRIM ④



CARPET ⑥



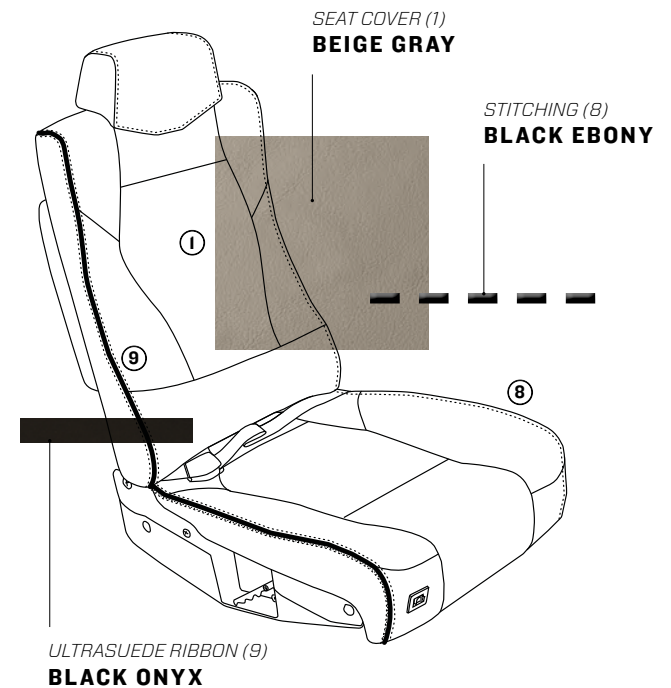
SEAT BELT COLOR ⑦





PREMIUM
***STITCHING &
 ULTRASUEDE***

Stitching variations for seats are possible in the standard definition. The armrests have the same stitching color as the seat leather's shade. For the flight control yokes, only black stitching is available.



STANDARD

BLACK EBONY



TAUPE GRAY



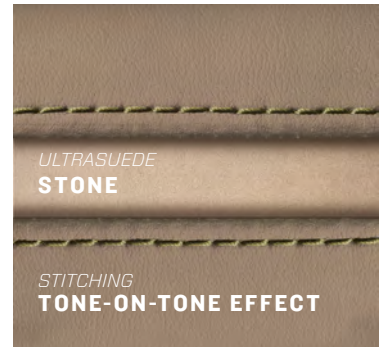
LIGHT SAND



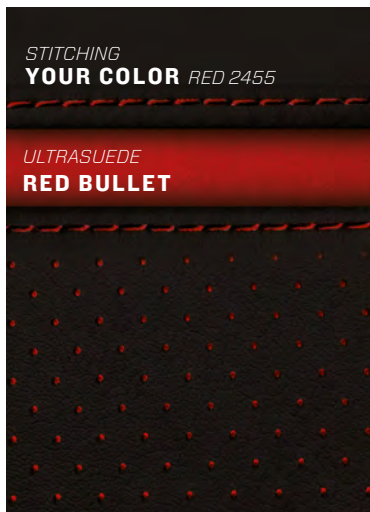
BEIGE GRAY



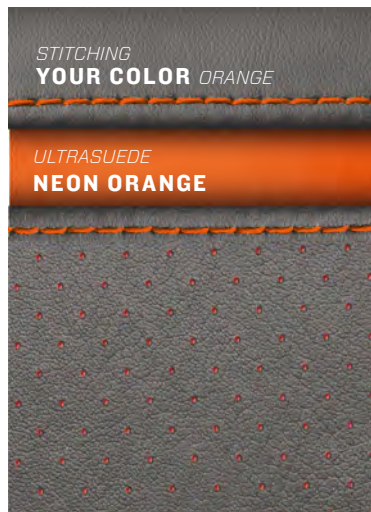
LIGHT BROWN



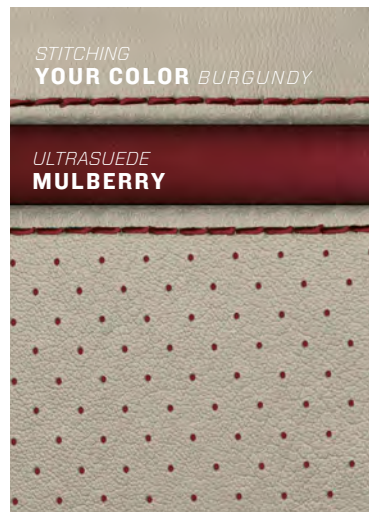
OPTIONNAL



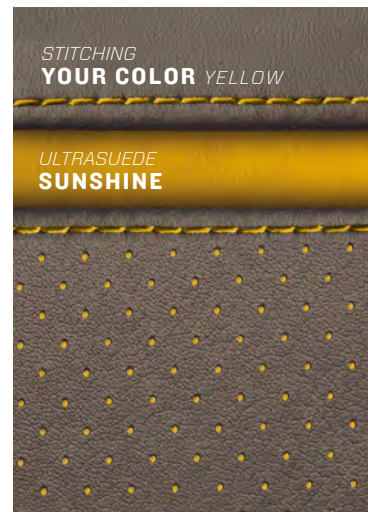
PERFORATED
RED BULLET



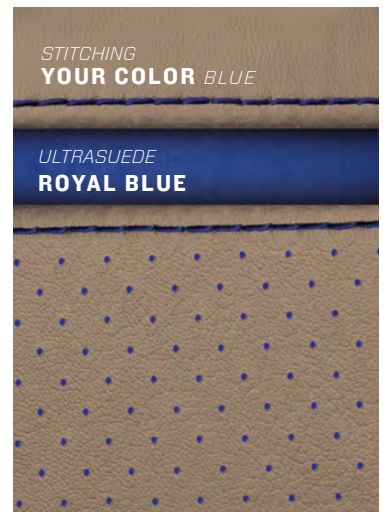
PERFORATED
NEON ORANGE



PERFORATED
MULBERRY



PERFORATED
SUNSHINE



PERFORATED
ROYAL BLUE



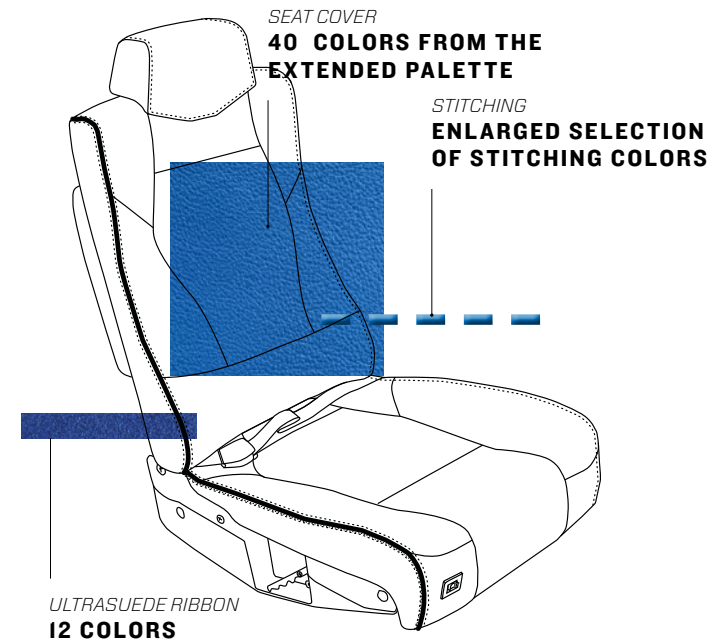
DO IT
YOURSELF INTERIOR

HERE ARE SOME SUGGESTIONS OF TBM INTERIOR HARMONIES CREATED WITH THE EXTENDED PALETTE COLORS



DO IT YOURSELF INTERIOR CUSTOMIZATION

Daher's design team is ready to help in the TBM's interior selection. Feeling creative? With a \$10,000 option, an extended color palette of 40 additional leather shades and stitching are available to create a truly unique interior.

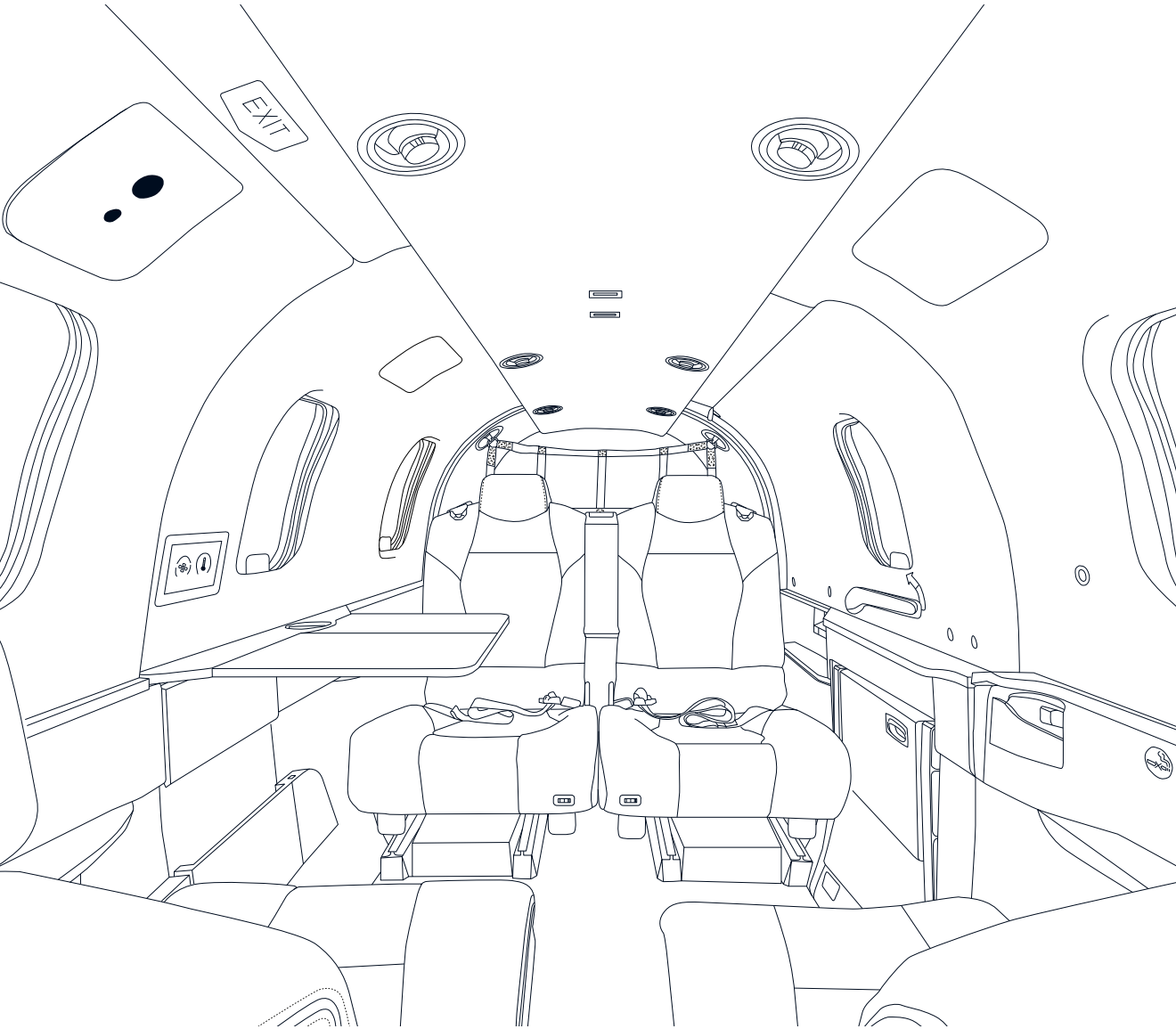


ULTRASUEDE RIBBON

BLACK ONYX	BONE
ELEPHANT	OYSTER
STONE	MINK
SEASHELL	ROYAL BLUE
MULBERRY	RED BULLET
NEON ORANGE	SUNSHINE

EXTENDED LEATHER COLORS PALETTE

(full color description available from your sales representative)





COMPACT STORAGE



**COMPACT STORAGE WITH
PILOT'S CASE SUPPORT**



**COMPACT STORAGE
WITH TOP CABINET**

OPTIONS

CABINETS

Several storage cabinet configurations are offered on both sides of the forward cabin behind the pilot seats.

A simple storage compact cabinet can be equipped with a hard support on top for the pilot's briefcase. Additionally, a top-fit storage cabinet is available. These cabinets match the color selection for the cabin interior's leather.

A quick-change extended large storage cabinet also is available. This replaces the left-side intermediate seat to offer more space for carry-on items, and it can include two USB slots and a 115-Volt universal plug.



PLUGGED

EXTENDED LARGE STORAGE

OPTIONS

ELITE PRIVACY

The Elite Privacy option integrates a quick-change lavatory compartment in the TBM's aft cabin. The compartment's color matches the overall passenger cabin ambience selected.





SPECIAL EDITION **RED BULLET**

Seat cover : **BLACK EBONY**
(WITH PERFORATED LEATHER)

Ultrasuede: **RED BULLET**

Stitching: **RED**

Seatbelt: **MOJAVE RED**

Upper Side Panel: **WHITE SAND**

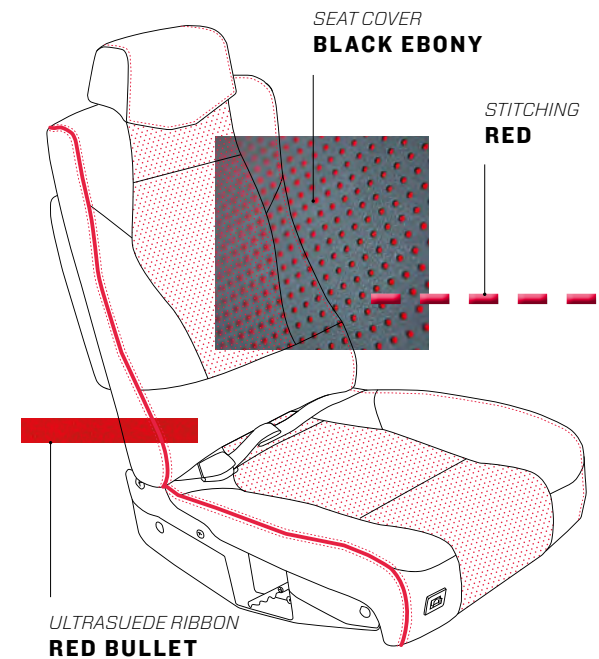
Lower Side Panel : **BLACK EBONY**

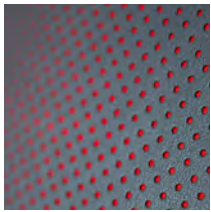
Carpet: **CHARCOAL BLACK**

Table finish: **CARBON**

Metal Finish: **FLAT BLACK**

THIS LIMITED EDITION OF THE TBM IS NAMED RED BULLET AFTER AN AMERICAN RACING HORSE WHO BECAME FAMOUS AS THE CHAMPION OF THE 2000 PREAKNESS STAKES IN BALTIMORE, MARYLAND.





SEAT COVER
BLACK EBONY (WITH PERFORATED LEATHER)



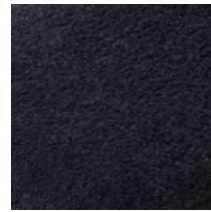
ULTRASUEDE RIBBON
RED BULLET



UPPER SIDE PANEL
WHITE SAND



LOWER SIDE PANEL
BLACK EBONY



CARPET
CHARCOAL BLACK

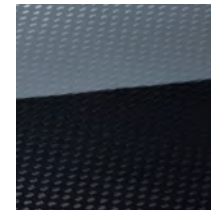


TABLE FINISH
CARBON



METAL FINISH
FLAT BLACK



INTERIOR
SUGGESTIONS

THE FOLLOWING ARE SUGGESTIONS FOR TBM INTERIOR HARMONIES CREATED WITH THE EXTENDED PALETTE OF COLORS



HAVANA 1

Seat cover: **HAVANA**

Ultrasuede ribbon: **BONE**

Stitching: **HAVANA**

Seatbelt: **VOLO TAN**

Upper side panel: **WHITE SAND**

Lower side panel: **HAVANA**

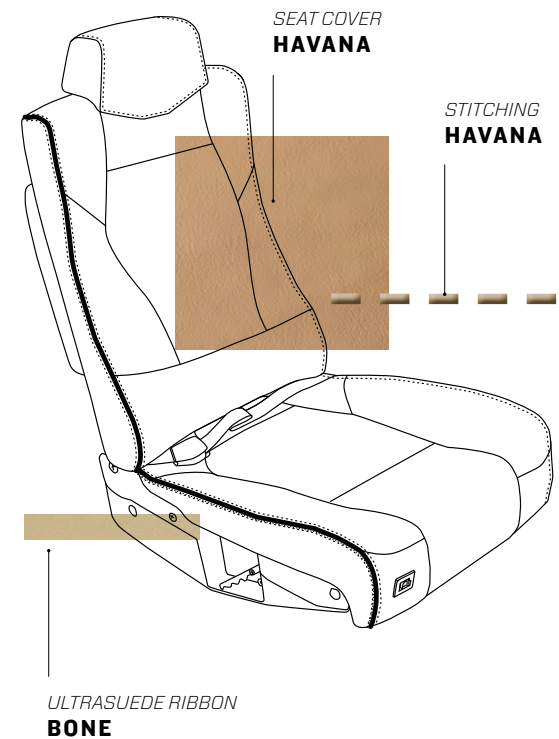
Carpet: **LIGHT BROWN**

Folding table cover: **GLOSSY WALNUT**

Metal finish: **GOLD**

*"HAVANA, LUCID, SHADOWED REMINISCENT GARDEN
IN AN INFINITE INSOMNIA HARNESSING THE DAWN.
THROBBING UNIQUELY, UNIQUELY UNDERSTANDING,
FOLLOWING THE BEAT, FRESHNESS, WATERCOLOR
EYES OF THE CITY."*

JORGE ENRIQUE GONZALEZ PACHECO





SEAT COVER
HAVANA



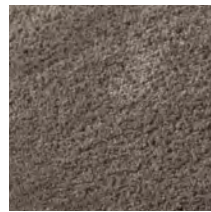
ULTRASUEDE RIBBON
BONE



UPPER SIDE PANEL
LIGHT SAND



LOWER SIDE PANEL
HAVANA



CARPET
LIGHT BROWN

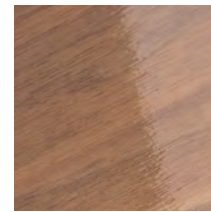


TABLE FINISH
GLOSSY WALNUT



METAL FINISH
GOLD

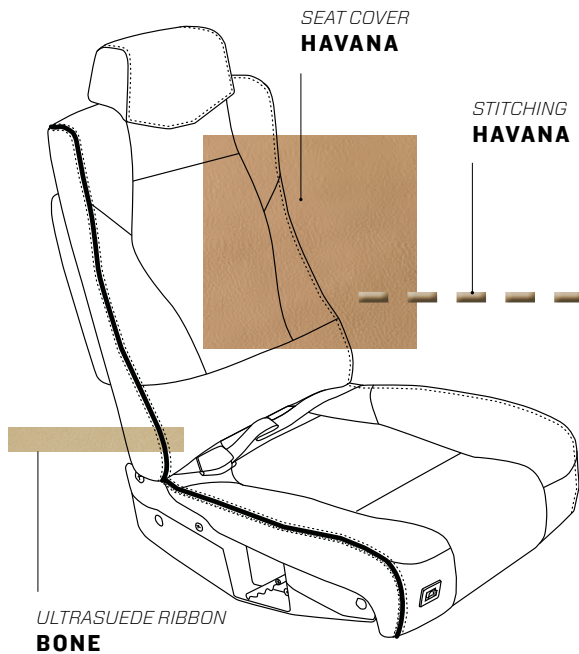


HAVANA 2

Seat cover: **HAVANA**
 Ultrasuede ribbon: **BONE**
 Stitching: **HAVANA**
 Seatbelt: **VOLO TAN**
 Upper side panel: **LIGHT SAND**
 Lower side panel: **LIGHT SAND**
 Carpet: **LIGHT BROWN**
 Folding table cover: **GLOSSY WALNUT**
 Metal finish: **GOLD**

"THE STEAMY HAVANA NIGHT AIR BECAME HEAVY THROUGH THE BROKEN-UP STREETS OF THE OLD CITY WHERE ANCIENT DETROIT MONSTERS WERE ON DISPLAY LIKE DINOSAURS FROM SOME PREHISTORIC ERA, FORGOTTEN, GIVEN UP TO THE BOUNDARIES OF TIME."

STEVE ZAK





SEAT COVER
HAVANA



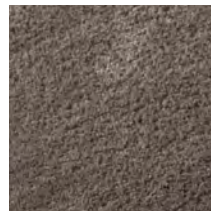
ULTRASUEDE RIBBON
BONE



UPPER SIDE PANEL
LIGHT SAND



LOWER SIDE PANEL
LIGHT SAND



CARPET
LIGHT BROWN

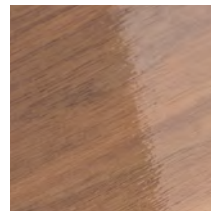
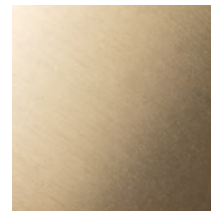
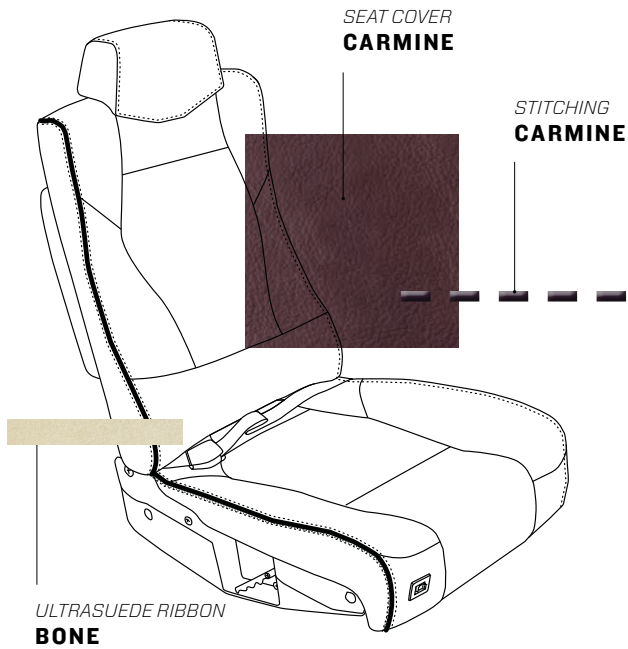


TABLE FINISH
GLOSSY WALNUT



METAL FINISH
GOLD



JAIPUR 1

Seat cover: **CARMINE**
 Ultrasuede ribbon: **BONE**
 Stitching: **CARMINE**
 Seatbelt: **CLARET**
 Upper side panel: **WHITE SAND**
 Lower side panel: **WHITE SAND**
 Carpet: **TAUPE GRAY**
 Folding table cover: **KOTO MAT**
 Metal finish: **BRUSHED STAINLESS**

"CITIES LIKE JAIPUR WITHSTAND THE TEST OF TIME AND FATE AND ARISE TO SHOWCASE, THAT NO MATTER WHAT WE SURVIVE REAL WILL AND INTIMATE ZEAL IN LIFE IS WHAT MAKES IT LIVE ON FOR EVERY INDIAN, THIS IS A CITY OF PRIDE AND MUST VISIT SPOT ON!"

UMASREE RAGHUNATH





SEAT COVER
CARMINE



ULTRASUEDE RIBBON
OYSTER



UPPER SIDE PANEL
WHITE SAND



LOWER SIDE PANEL
WHITE SAND



CARPET
TAUPE GRAY

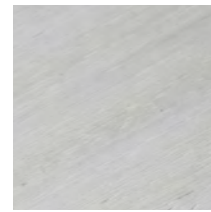


TABLE FINISH
KOTO MAT



METAL FINISH
BRUSHED STAINLESS

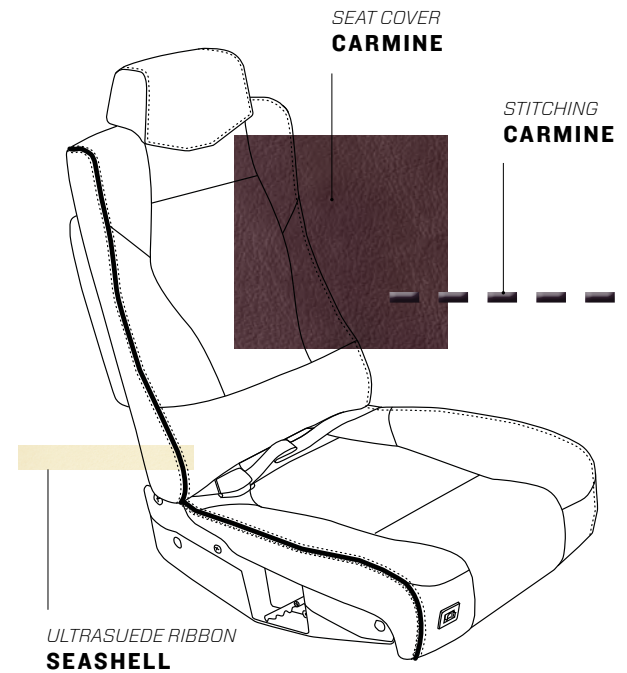


JAIPUR 2

Seat cover: **CARMINE**
 Ultrasuede ribbon: **SEASHELL**
 Stitching: **CARMINE**
 Seatbelt: **CLARET**
 Upper side panel: **LIGHT SAND**
 Lower side panel: **BEIGE GRAY**
 Carpet: **LIGHT BROWN**
 Folding table cover: **KOTO MAT**
 Metal finish: **BRUSHED STAINLESS**

"THE WALLS OF JAIPUR STAND PROUD IN PINK, GUARDING THE CITY IN THEIR RUSTIC SHADE, SOFTENING THE HEAT WHEN SOL DOESN'T BLINK, AND THE COLD OF BITTERLY DRY WINTER DAYS. ANCIENT QUILAS AND MAHALS WITH LIFE STILL BREATHE, MORE THAN INANIMATE CONCRETE OR MERE BRICKS RED, A MOSAIC OF TRADITION THAT HERITAGE BEQUEATHS, INSCRIPTIONS OF CULTURE WHERE HISTORY TREADS."

NISHU MATHUR





SEAT COVER
CARMINE



ULTRASUEDE RIBBON
SEASHELL



UPPER SIDE PANEL
LIGHT SAND



LOWER SIDE PANEL
BEIGE GRAY



CARPET
LIGHT BROWN

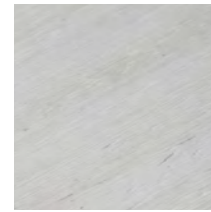
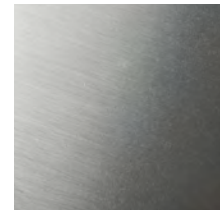


TABLE FINISH
KOTO MAT



METAL FINISH
BRUSHED STAINLESS

Editorial team Jeff Lenorovitz
(The InfoWEST Group)

Photos credits Maxime Fourcade (p. 5,
7, 9, 11, 13, 15, 17, 19, 35, 37, 39, 41, 43, 45, 47)
DR. (p. 4, 6, 8, 10, 12, 14, 16, 18, 20, 22, 24,
26, 28, 42, 44, 45) & DR Graphic design
Malherbe Paris, April 2019

**This book is a non-contractual document and
for information only. Daher reserves the right
to revise all information presented in this
document whenever occasioned by product
improvements, government regulations or other
good cause.**

 **DAHER**
AIRCRAFT DIVISION

Sales & Marketing Department
Aéroport de Tarbes-Lourdes-Pyrénées
65921 Tarbes Cedex 9 — France
Telephone: +33 (0)6 07 38 05 07
U.S. Headquarters
601 NE 10th Street
Pompano Beach, Florida 33060 — USA
Telephone: +1 954-993-8477

www.tbm.aero

