

TBM
910

INTERIOR GUIDE



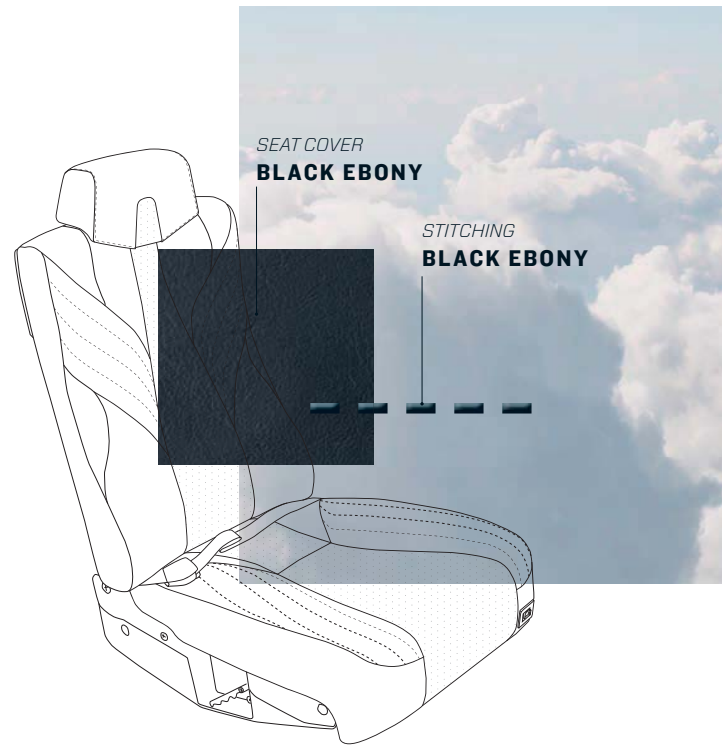


EXCLUSIVE HARMONIES

Included in the enhanced operational package

BLACKFRIARS

Seat cover: **BLACK EBONY**
Folding table cover: **CARBON**
Upper side panel: **WHITE SAND**
Central overhead panel: **CARBON**
Metal finish: **FLAT BLACK**
Lower side panel: **BLACK EBONY**
Carpet: **CHARCOAL BLACK**
Stitching: **BLACK EBONY**
Seatbelt: **BLACK JET**
Ultra-leather fairings: **BLACK EBONY**

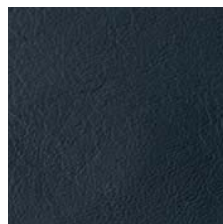


*"SEVEN BLACK FRIARS SITTING BACK TO BACK
FISHED FROM THE BRIDGE FOR A PIKE OR A JACK.
THE FIRST CAUGHT A TIDDLER, THE SECOND CAUGHT
A CRAB, THE THIRD CAUGHT A WINKLE, THE FOURTH
CAUGHT A DAB, THE FIFTH CAUGHT A TADPOLE,
THE SIXTH CAUGHT AN EEL, AND THE SEVENTH ONE
CAUGHT AN OLD CART-WHEEL.."*

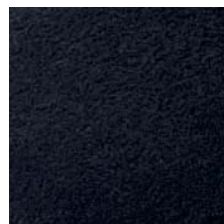
ELEANOR FARJEON



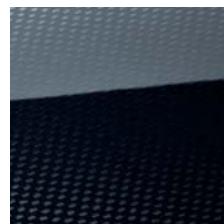
UPPER SIDE PANEL
WHITE SAND



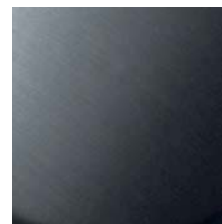
LOWER SIDE PANEL
BLACK EBONY



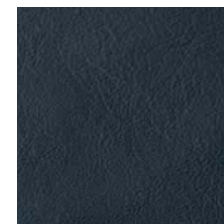
CARPET
CHARCOAL BLACK



CENTRAL OVERHEAD
CARBON



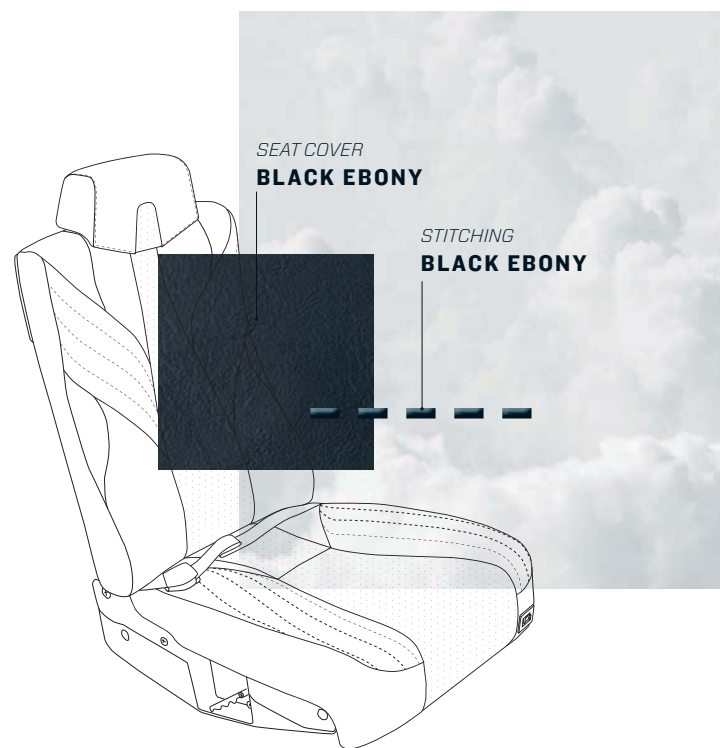
METAL FINISH
FLAT BLACK



SEAT COVER
BLACK EBONY

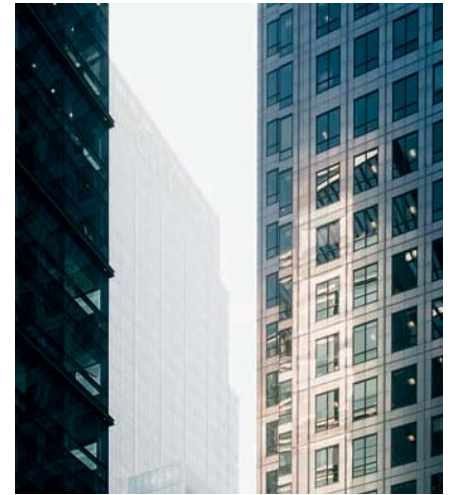
LONDON

Seat cover: **BLACK EBONY**
Folding table cover: **CARBON**
Upper side panel: **LIGHT SAND**
Central overhead panel: **CARBON**
Metal finish: **FLAT BLACK**
Lower side panel: **BEIGE GRAY**
Carpet: **CHARCOAL BLACK**
Stitching: **BLACK EBONY**
Seatbelt: **BLACK JET**
Ultra-leather fairings: **BLACK EBONY**



"LONDON, MY BEAUTIFUL, IT IS NOT THE SUNSET NOR THE PALE GREEN SKY SHIMMERING THROUGH THE CURTAIN OF THE SILVER BIRCH, NOR THE QUIETNESS; IT IS NOT THE HOPPING OF BIRDS UPON THE LAWN, NOR THE DARKNESS STEALING OVER ALL THINGS THAT MOVES ME."

F. S. FLINT



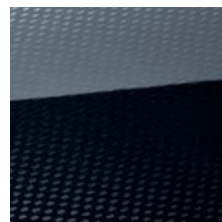
UPPER SIDE PANEL
LIGHT SAND



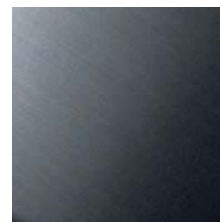
LOWER SIDE PANEL
BEIGE GRAY



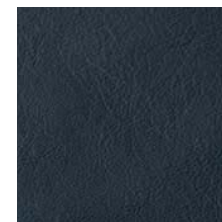
CARPET
CHARCOAL BLACK



CENTRAL OVERHEAD
CARBON



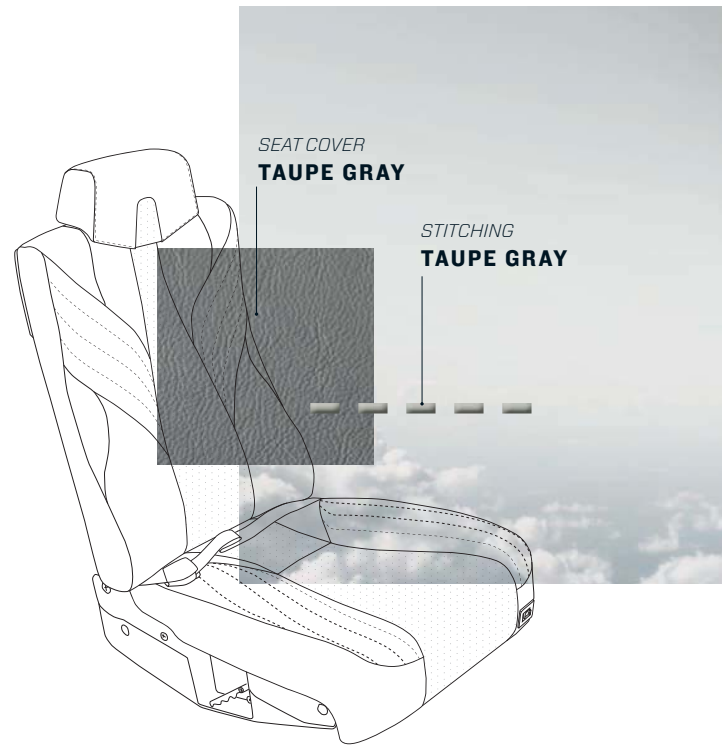
METAL FINISH
FLAT BLACK



SEAT COVER
BLACK EBONY

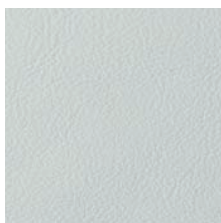
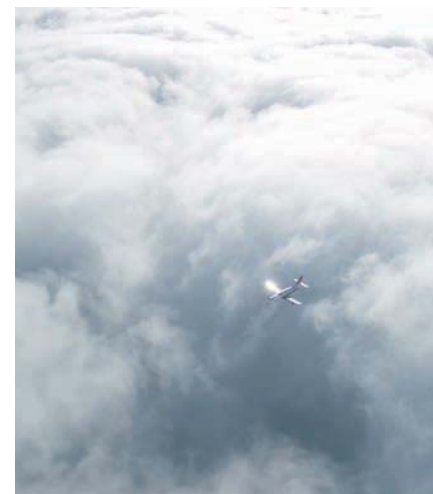
GOOSE BAY

Seat cover: **TAUPE GRAY**
Folding table cover: **SAPELLI MAT**
Upper side panel: **WHITE SAND**
Central overhead panel: **SAPELLI MAT**
Metal finish: **BRUSHED STAINLESS**
Lower side panel: **TAUPE GRAY**
Carpet: **TAUPE GRAY**
Stitching: **TAUPE GRAY**
Seatbelt: **CHROME GRAY**
Ultra-leather fairings: **TAUPE GRAY**



"A KNIFE IN THIS SOIL THRUST THE CUTTING COLD EDGE BARELY DULLED AT THE YEAR'S ONE NOON; CELLED HERE BY MOUNTAINS, ENCIRCLED BY FROST LIVE MEN BY THE CHALLENGE OF WAR MADE BOLD."

ROBERT RESOE



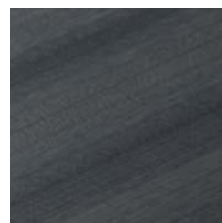
UPPER SIDE PANEL
WHITE SAND



LOWER SIDE PANEL
TAUPE GRAY



CARPET
TAUPE GRAY



CENTRAL OVERHEAD
SAPELLI MAT



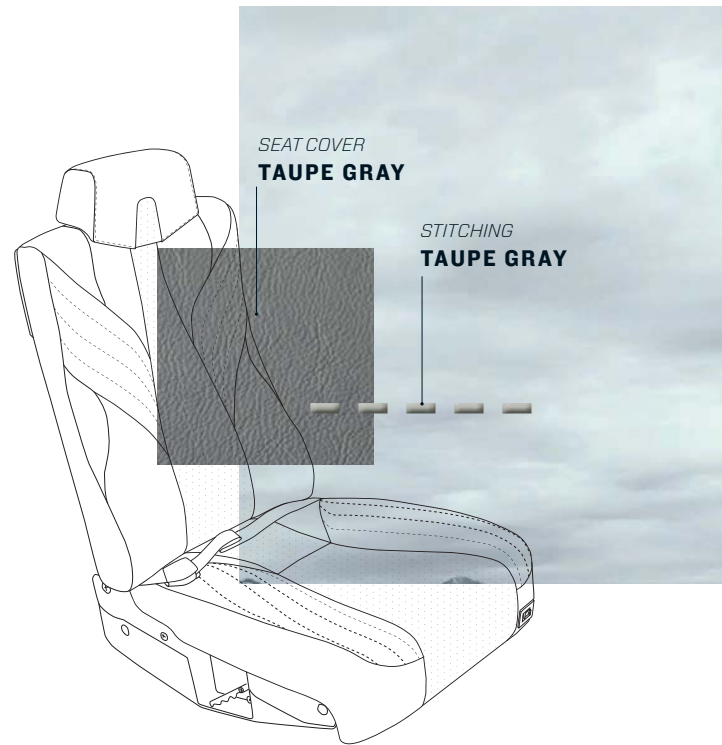
METAL FINISH
**BRUSHED
STAINLESS**



SEAT COVER
TAUPE GRAY

LABRADOR

Seat cover: **TAUPE GRAY**
Folding table cover: **SAPELLI MAT**
Upper side panel: **WHITE SAND**
Central overhead panel: **SAPELLI MAT**
Metal finish: **BRUSHED STAINLESS**
Lower side panel: **LIGHT SAND**
Carpet: **TAUPE GRAY**
Stitching: **TAUPE GRAY**
Seatbelt: **CHROME GRAY**
Ultra-leather fairings: **TAUPE GRAY**

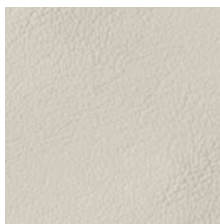


*"I SET OUT ONE NIGHT WHEN THE TIDE WAS LOW
THERE WERE SIGNS IN THE SKY BUT I DID NOT KNOW
I'D BE CAUGHT IN THE GRIP OF THE UNDERTOW
DITCHED ON A BEACH WHERE THE SEA HATES TO GO
WITH A CHILD IN MY ARMS AND A CHILL IN MY SOUL
AND MY HEART THE SHAPE OF A BEGGING BOWL"*

LEONARD COHEN



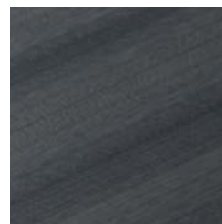
UPPER SIDE PANEL
WHITE SAND



LOWER SIDE PANEL
LIGHT SAND



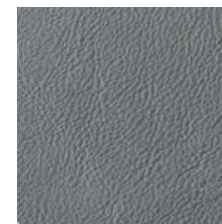
CARPET
TAUPE GRAY



CENTRAL OVERHEAD
SAPELLI MAT



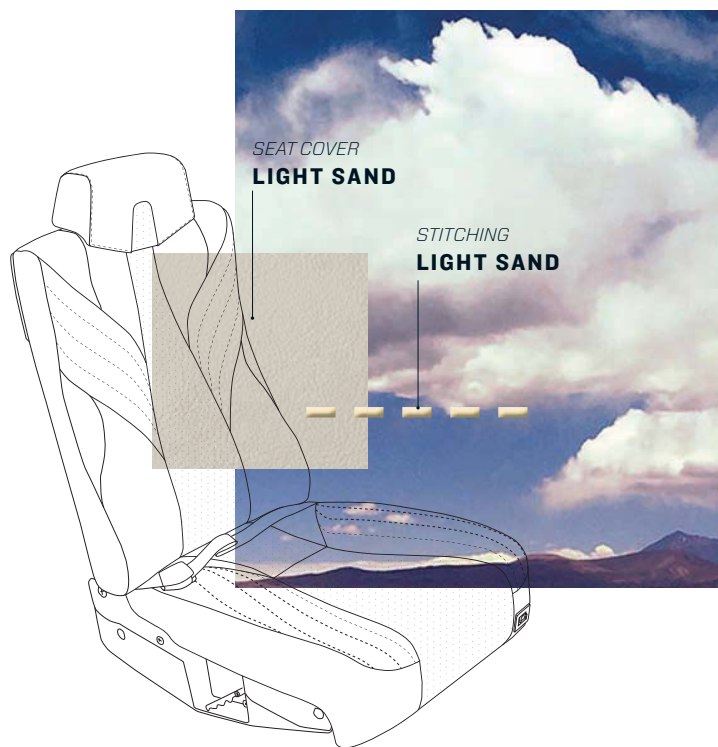
METAL FINISH
**BRUSHED
STAINLESS**



SEAT COVER
TAUPE GRAY

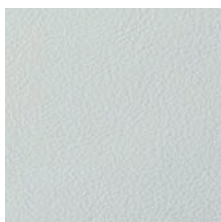
ATACAMA

Seat cover: **LIGHT SAND**
Folding table cover: **KOTO MAT**
Upper side panel: **WHITE SAND**
Central overhead panel: **KOTO MAT**
Metal finish: **BRUSHED STAINLESS**
Lower side panel: **LIGHT SAND**
Carpet: **LIGHT BROWN**
Stitching: **LIGHT SAND**
Seatbelt: **SOFT MOON**
Ultra-leather fairings: **LIGHT SAND**

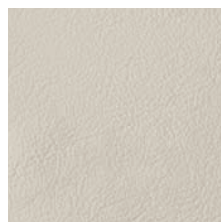


"THE DESERT OF ATACAMA SOARED OVER INFINITIES OF DESERTS TO BE THERE LIKE THE WIND FEEL IT PASS WHISTLING THROUGH THE LEAVES OF THE TREES LOOK AT IT BECOME TRANSPARENT FARAWAY AND JUST ACCOMPANIED BY THE WIND."

RAÚL ZURITA



UPPER SIDE PANEL
WHITE SAND



LOWER SIDE PANEL
LIGHT SAND



CARPET
LIGHT BROWN



CENTRAL OVERHEAD
KOTO MAT



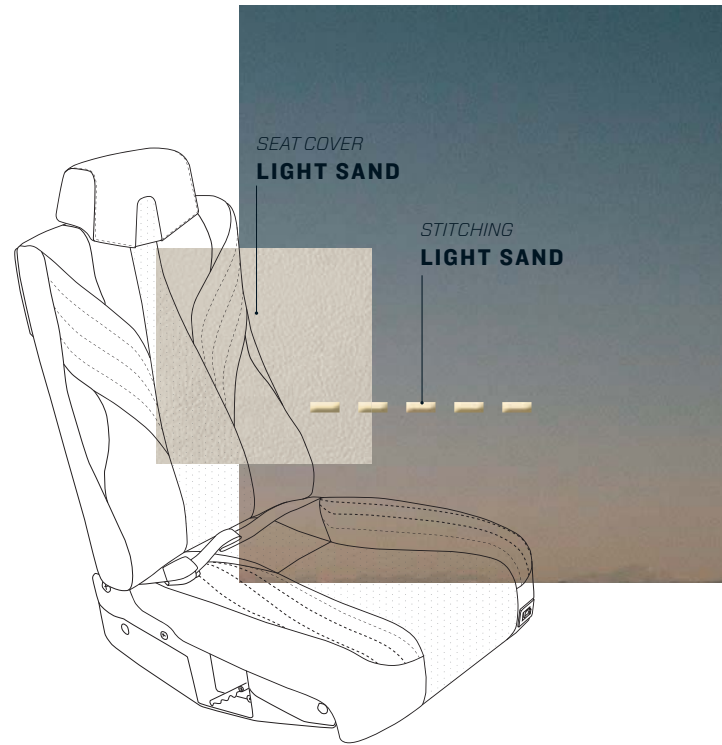
METAL FINISH
**BRUSHED
STAINLESS**



SEAT COVER
LIGHT SAND

SAN PEDRO

Seat cover: **LIGHT SAND**
Folding table cover: **GLOSSY WALNUT**
Upper side panel: **WHITE SAND**
Central overhead panel: **GLOSSY WALNUT**
Metal finish: **GOLD**
Lower side panel: **LIGHT BROWN**
Carpet: **LIGHT BROWN**
Stitching: **LIGHT SAND**
Seatbelt: **SOFT MOON**
Ultra-leather fairings: **LIGHT SAND**



"HIGH ON ATACAMA AIR MASSES ROSE TO PASS EAST OVER THE HIGH PLATEAU GIFTING THE WINDWARD MOUNTAINS MISTS & MOISTURE DESCENDING HOTLY ON THE LEEWARD LANDS WHEREON THE EYES OF THE SALTY ONE ERUPTED IN OUTRAGED CLOUDS OF ASH"

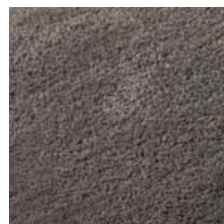
NICK S.R



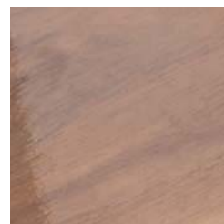
UPPER SIDE PANEL
WHITE SAND



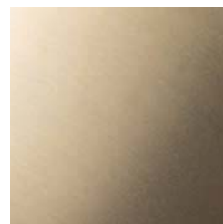
LOWER SIDE PANEL
LIGHT BROWN



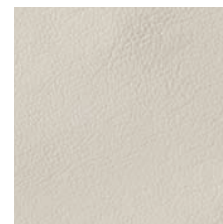
CARPET
LIGHT BROWN



CENTRAL OVERHEAD
GLOSSY WALNUT



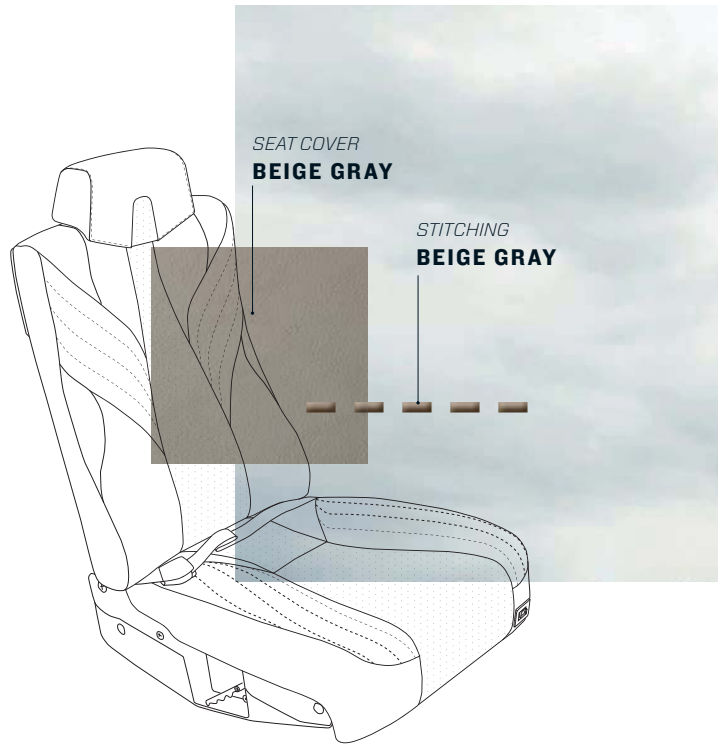
METAL FINISH
GOLD



SEAT COVER
LIGHT SAND

OSLO

Seat cover: **BEIGE GRAY**
Folding table cover: **SAPELLI MAT**
Upper side panel: **WHITE SAND**
Central overhead panel: **SAPELLI MAT**
Metal finish: **BRUSHED STAINLESS**
Lower side panel: **BEIGE GRAY**
Carpet: **LIGHT BROWN**
Stitching: **BEIGE GRAY**
Seatbelt: **OATMEAL**
Ultra-leather fairings: **BEIGE GRAY**



*"THE GULLS ONCE CRYING NOW TUCKING THEIR BEAKS
BENEATH THEIR COAT OF SMOOTH WEATHERED WINGS.
AS I LOOK DOWN AT OSLO AS THE EVENING SETS IN, MY
MIND VENTURES IN HISTORY'S IMAGINATION, I IMAGINED
HOW THE INLET ONCE FELT CENTURIES GONE DID
VIKINGS ROAR "PULL" IN THEIR ANCIENT TONGUE?"*

NA FIANNA "OSLO POEM"



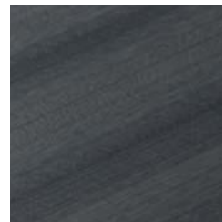
UPPER SIDE PANEL
WHITE SAND



LOWER SIDE PANEL
BEIGE GRAY



CARPET
LIGHT BROWN



CENTRAL OVERHEAD
SAPELLI MAT



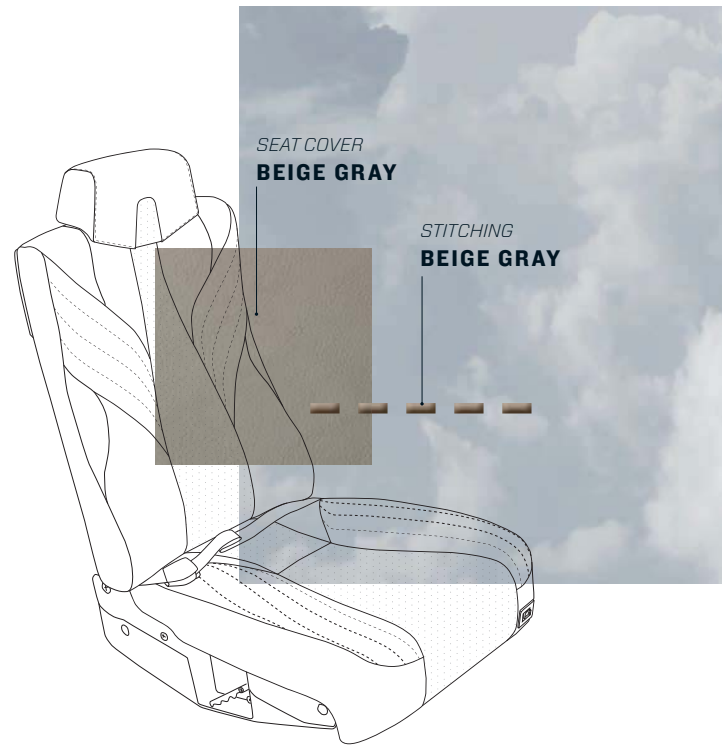
METAL FINISH
**BRUSHED
STAINLESS**



SEAT COVER
BEIGE GRAY

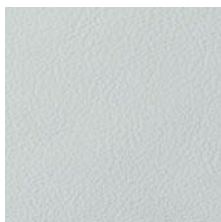
FJORD

Seat cover: **BEIGE GRAY**
Folding table cover: **CARBON**
Upper side panel: **WHITE SAND**
Central overhead panel: **CARBON**
Metal finish: **BRUSHED STAINLESS**
Lower side panel: **BLACK EBONY**
Carpet: **CHARCOAL BLACK**
Stitching: **BEIGE GRAY**
Seatbelt: **OATMEAL**
Ultra-leather fairings: **BEIGE GRAY**

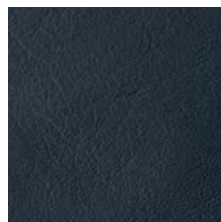


*"THE AIR IS AS BREATHABLE AS CONCRETE THE TREES
LIKE FENCES PROPPED AGAINST A WIND THAT KNOWS
HUNGER THE SMALL FARMS BUNKERED DOWN IN THEIR
GARTHS ON LAND WORKED LEAN AND SEEDED WITH
STONE. YOU TELL ME THERE ARE WOLVES AND BEARS.
I BELIEVE YOU."*

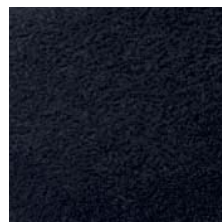
KATHLEEN JONES



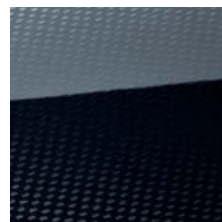
UPPER SIDE PANEL
WHITE SAND



LOWER SIDE PANEL
BLACK EBONY



CARPET
CHARCOAL BLACK



CENTRAL OVERHEAD
CARBON



METAL FINISH
**BRUSHED
STAINLESS**



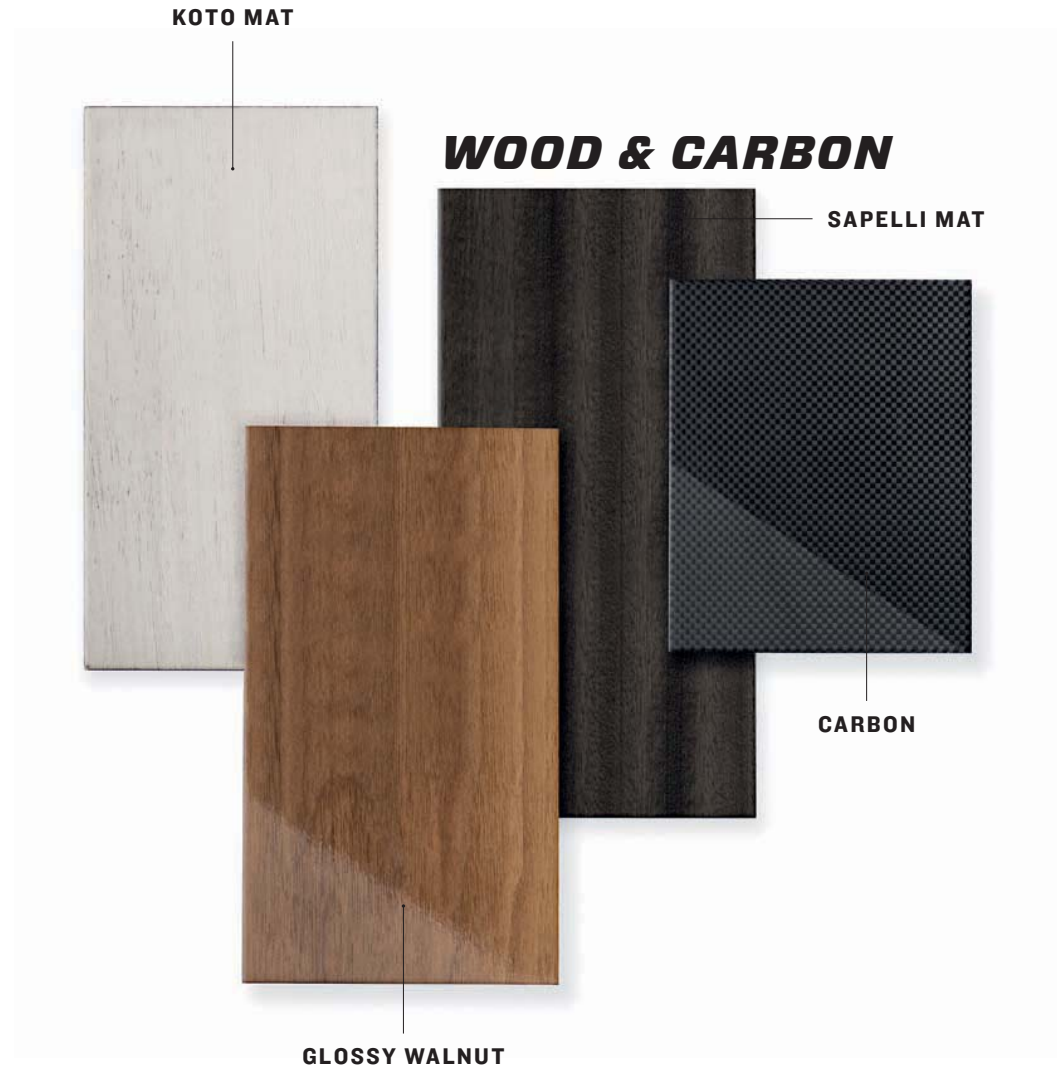
SEAT COVER
BEIGE GRAY

PREMIUM INTERIOR SELECTION

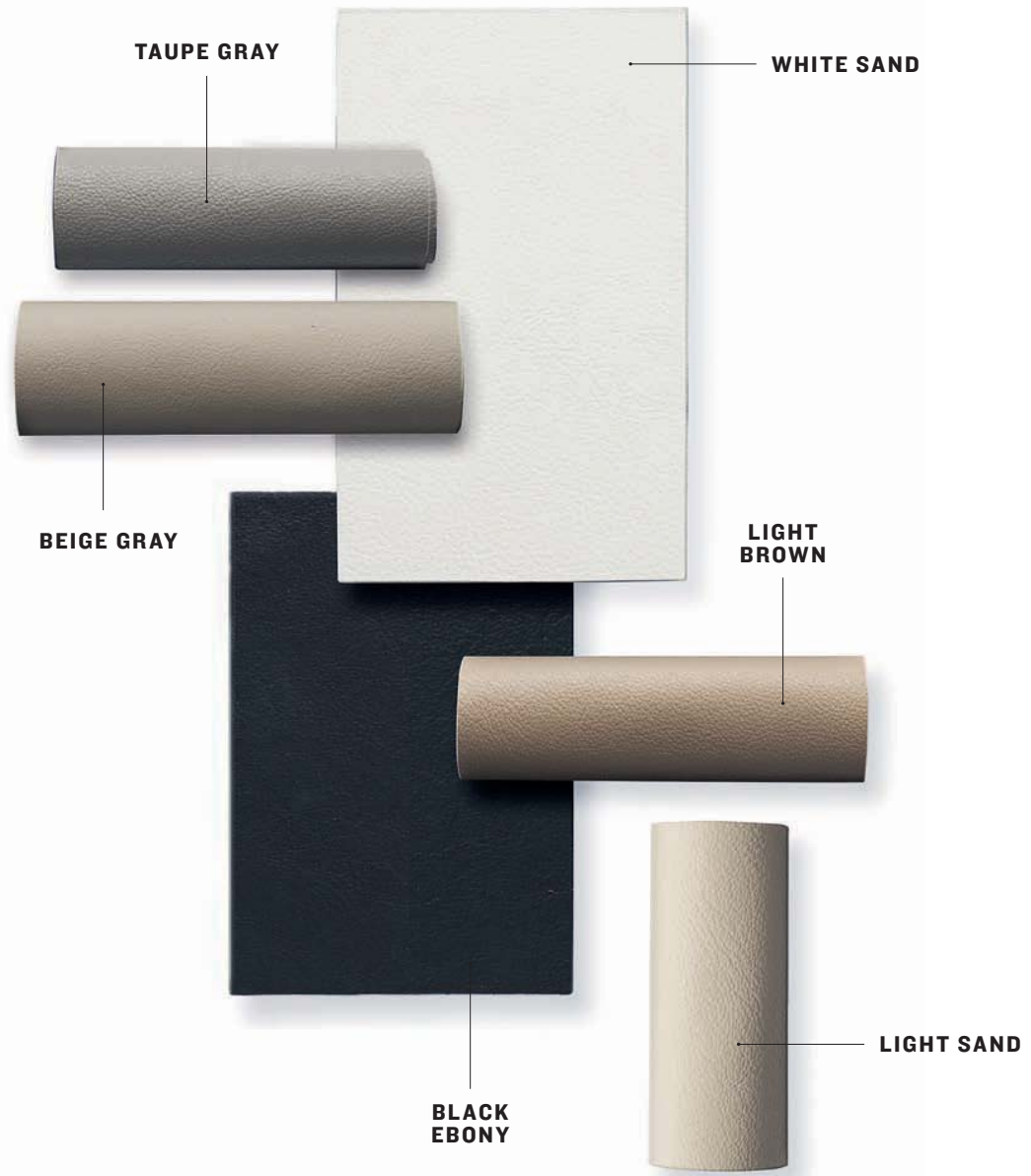
In this section, you can create your own cabin harmony by selecting other standard shades and material.

PREMIUM

MATERIAL SELECTION



LEATHER



PREMIUM

INTERIOR SELECTION

Identified on this page are the areas that can be customized in creating your TBM interior, Stitching, belts and the seat base cover are harmonized with the selection. If not specified, stitching, belts and the seat base cover are harmonized with selection. Software tools available on our website or through Apple AppStore or Android applications on Google Play will assist you in getting a perfect picture of what your new interior will look like.

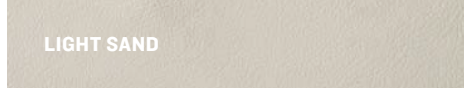
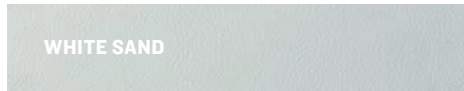
[HTTP://WWW.TBM.AERO/
PERSONALIZE-YOUR-TBM/](http://www.tbm.aero/personalize-your-tbm/)

See page 26 for more stitching possibilities

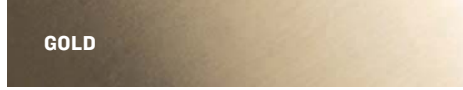
IN ADDITION, THE DELUXE WOOD OR CARBON TRIM INTERIOR PACKAGE (VALUE \$8,600) ALLOWS YOU TO ADD WOOD OR CARBON FINISH ON THE CENTRAL UPPER PANEL, TABLE COVER AND COVERS OF THE STORAGE CABINET DOORS.

SEAT FAIRINGS COLOR MATCH THE SEAT LEATHER SHADE, EXCEPT FOR THE REAR SEAT HULL WHICH IS ALWAYS CARBON COVER FOR PRACTICAL PURPOSE

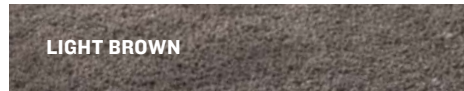
STANDARD LEATHER SHADES ①③⑥⑦



WOOD & CARBON TRIM ②④



CARPET ⑧



SEAT BELT COLOR ⑨





③
UPPER SIDE
PANEL

④
CENTRAL OVERHEAD
PANEL FINISH
& TABLET COVER

③
UPPER SIDE
PANEL

⑤
METAL FINISH

⑤
METAL FINISH

①
SEAT COVER

①
SEAT COVER

②
FOLDING
TABLE FINISH

④
CENTRAL OVERHEAD
PANEL FINISH
& TABLET COVER

⑨
BELTS

⑥
LOWER SIDE PANEL,
CABINET & GLOVE
COMPARTMENT

⑥
LOWER SIDE PANEL,
CABINET & GLOVE
COMPARTMENT

⑧
CARPET

⑦
STORAGE
SEE PAGE 30

PREMIUM

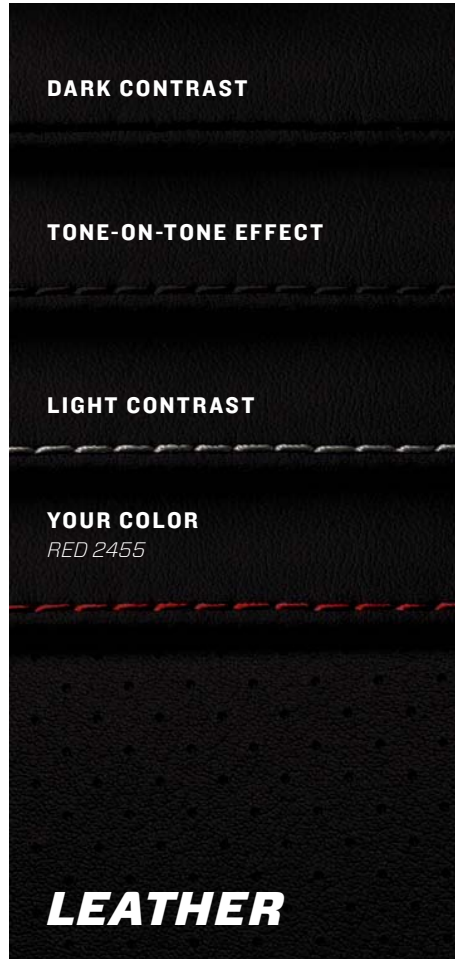
STITCHING

Here are some stitching variation possibilities in the standard definition. Stitching shade variation applies only on the seats. Only black stitching is available on the yokes. Armrests feature the same stitching color as the seat leather shade.

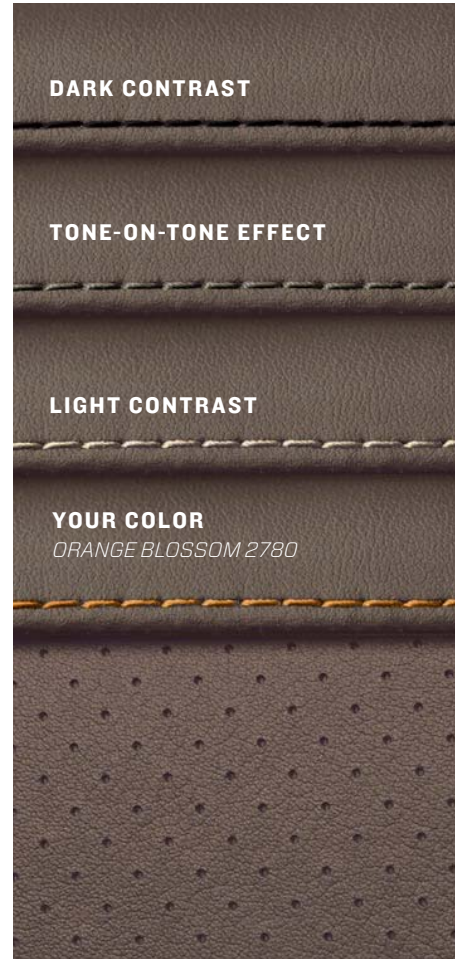


STITCHING

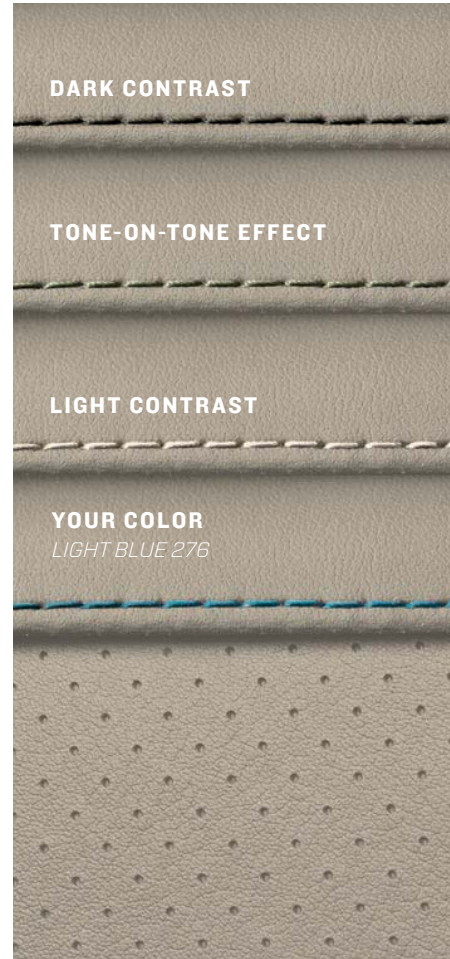
BLACK EBONY



BEIGE GRAY



LIGHT SAND



TAUPE GRAY



OPTIONS

CABINETS

STORAGE CABINETS

Several storage cabinet configurations are offered on both sides behind the pilot seats. There is a simple storage compact cabinet, which also can be equipped with a hard support on top for pilot's case. Also available is a storage cabinet to fit on top. All these cabinets match your interior leather color selection.



COMPACT STORAGE



COMPACT STORAGE WITH
PILOT'S CASE SUPPORT



COMPACT STORAGE
WITH TOP CABINET

OPTIONS

ELITE PRIVACY

ELITE COMPARTMENT

Elite Privacy option, integrates a quick-change lavatory compartment in the TBM's aft fuselage. Color match the passenger cabin ambience you have selected..



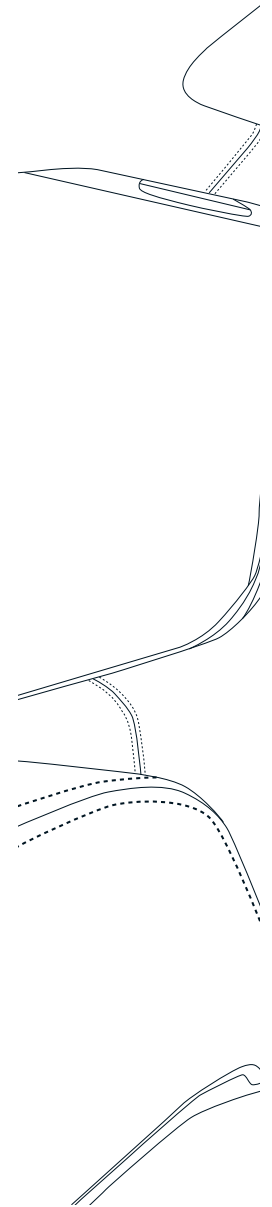
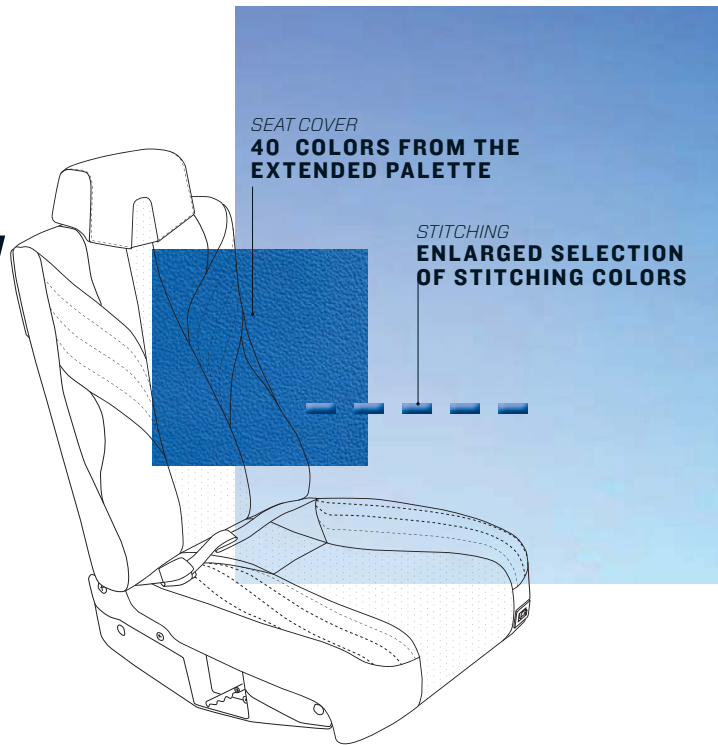
EXTENDED LARGE STORAGE CABINET

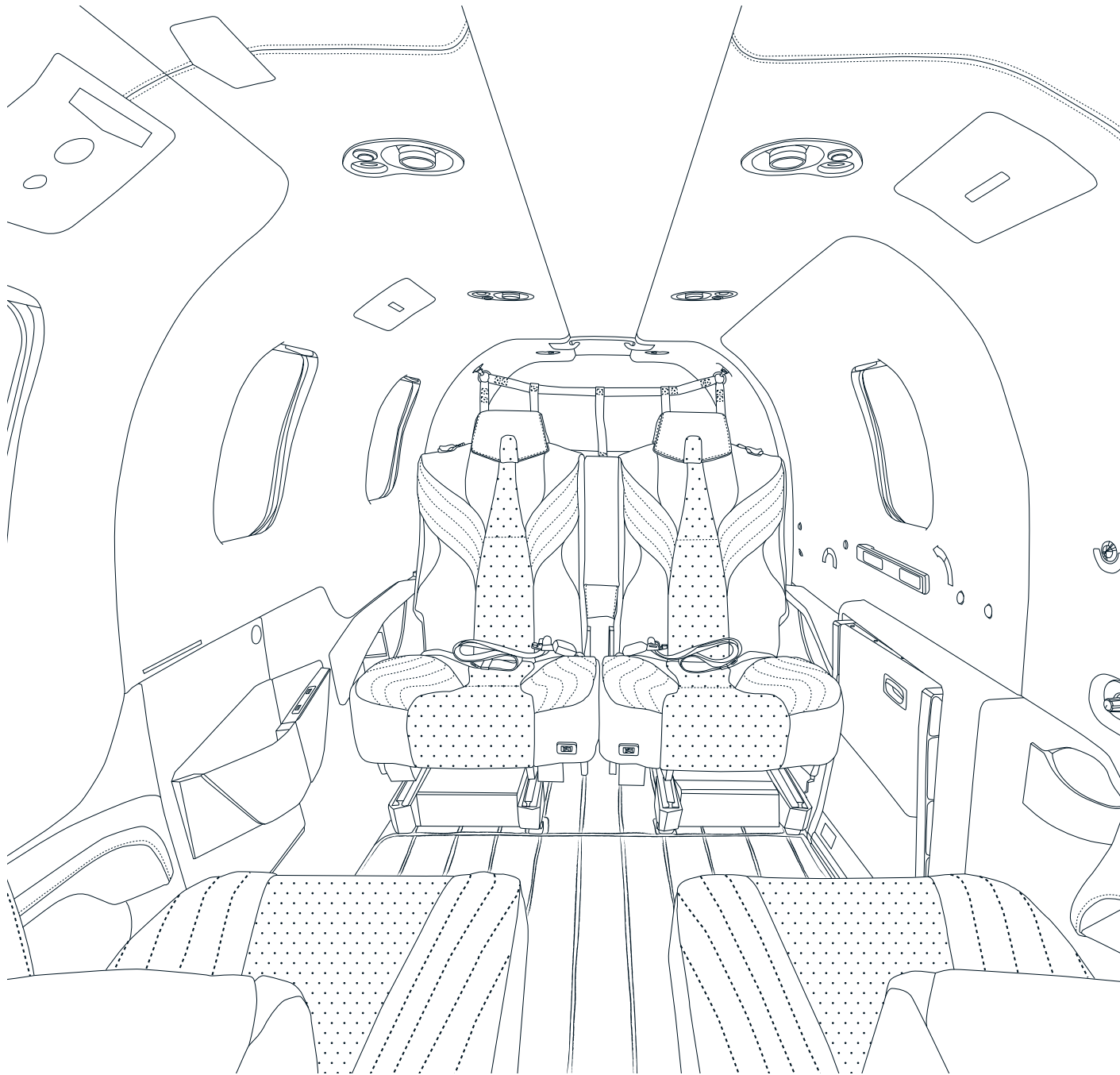
We're introducing in 2020 a new quick-change storage cabinet: the extended large storage cabinet. It replaces the left-side intermediate seat to offer more space for your carry-on items. This storage can be available with 2 USB slots and a 115v universal plug.



DO IT YOURSELF INTERIOR CUSTOMIZATION

Whatever your needs are, Daher design team is here to help you navigate your options.
Feeling creative? Through a \$10,000 option you have access to an extended color palette with 40 additional leather shades and stitching to create a unique interior. Contact your TBM sales contact to learn more about possibilities.





EXTENDED COLORS PALETTE

(full color description available from your sales representative)

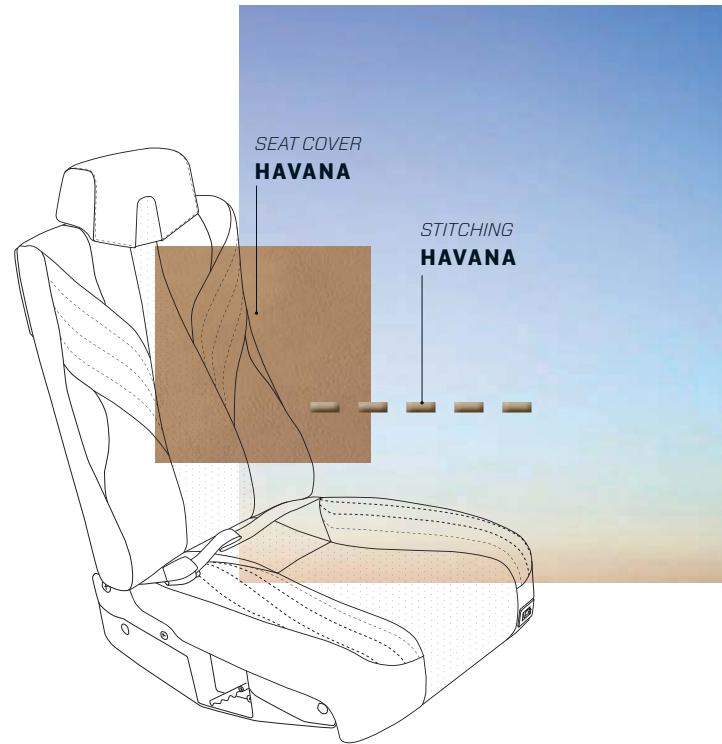


SUGGESTIONS

Here are some suggestions of TBM interior harmonies created with the extended palette colors

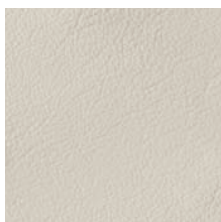
SUGGESTION 1

Seat cover: **HAVANA**
Folding table cover: **GLOSSY WALNUT**
Upper side panel: **WHITE SAND**
Central overhead panel: **GLOSSY WALNUT**
Metal finish: **GOLD**
Lower side panel: **HAVANA**
Carpet: **LIGHT BROWN**
Stitching: **HAVANA**
Seatbelt: **VOLO TAN**
Ultra-leather fairings: **HAVANA**



*"HAVANA, LUCID, SHADOWED REMINISCENT GARDEN
IN AN INFINITE INSOMNIA HARNESSING THE DAWN.
THROBBING UNIQUELY, UNIQUELY UNDERSTANDING,
FOLLOWING THE BEAT, FRESHNESS, WATERCOLOR
EYES OF THE CITY."*

JORGE ENRIQUE GONZALEZ PACHECO



UPPER SIDE PANEL
LIGHT SAND



LOWER SIDE PANEL
HAVANA



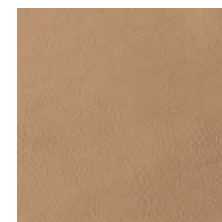
CARPET
LIGHT BROWN



CENTRAL OVERHEAD
GLOSSY WALNUT



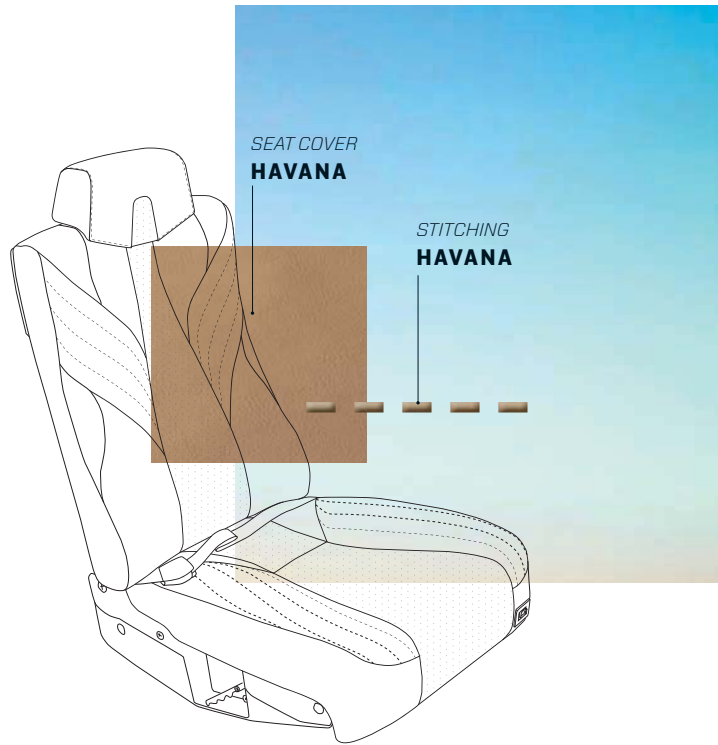
METAL FINISH
GOLD



SEAT COVER
HAVANA

SUGGESTION 2

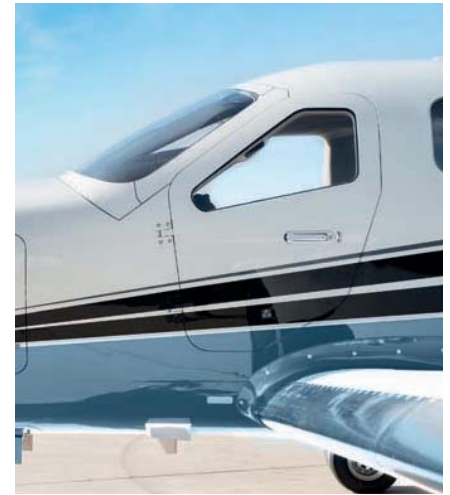
Seat cover: **HAVANA**
Folding table cover: **GLOSSY WALNUT**
Upper side panel: **LIGHT SAND**
Central overhead panel: **GLOSSY WALNUT**
Metal finish: **GOLD**
Lower side panel: **LIGHT SAND**
Carpet: **LIGHT BROWN**
Stitching: **HAVANA**
Seatbelt: **VOLO TAN**
Ultra-leather fairings: **HAVANA**



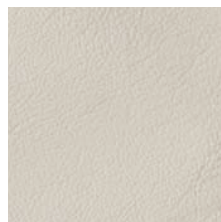
"THE STEAMY HAVANA NIGHT AIR BECAME HEAVY THROUGH THE BROKEN-UP STREETS OF THE OLD CITY WHERE ANCIENT DETROIT MONSTERS WERE ON DISPLAY LIKE DINOSAURS FROM SOME PREHISTORIC ERA, FORGOTTEN, GIVEN UP TO THE BOUNDARIES OF TIME."

STEVE ZAK





UPPER SIDE PANEL
LIGHT SAND



LOWER SIDE PANEL
LIGHT SAND



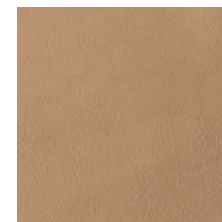
CARPET
LIGHT BROWN



CENTRAL OVERHEAD
GLOSSY WALNUT



METAL FINISH
GOLD



SEAT COVER
HAVANA

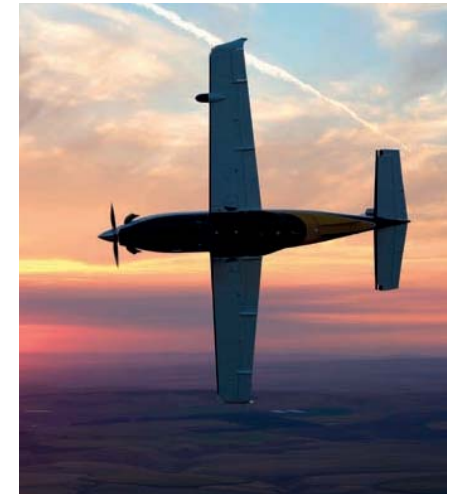
SUGGESTION 3

Seat cover: **CARMINE**
Folding table cover: **KOTO MAT**
Upper side panel: **WHITE SAND**
Central overhead panel: **KOTO MAT**
Metal finish: **BRUSHED STAINLESS**
Lower side panel: **WHITE SAND**
Carpet: **TAUPE GRAY**
Stitching: **CARMINE**
Seatbelt: **CLARET**
Ultra-leather fairings: **CARMINE**

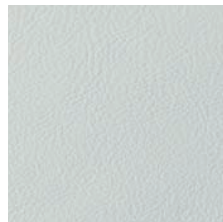


"CITIES LIKE JAIPUR WITHSTAND THE TEST OF TIME AND FATE AND ARISE TO SHOWCASE, THAT NO MATTER WHAT WE SURVIVE REAL WILL AND INTIMATE ZEAL IN LIFE IS WHAT MAKES IT LIVE ON FOR EVERY INDIAN, THIS IS A CITY OF PRIDE AND MUST VISIT SPOT ON!"

UMASREE RAGHUNATH



UPPER SIDE PANEL
WHITE SAND



LOWER SIDE PANEL
WHITE SAND



CARPET
TAUPE GRAY



CENTRAL OVERHEAD
KOTO MAT



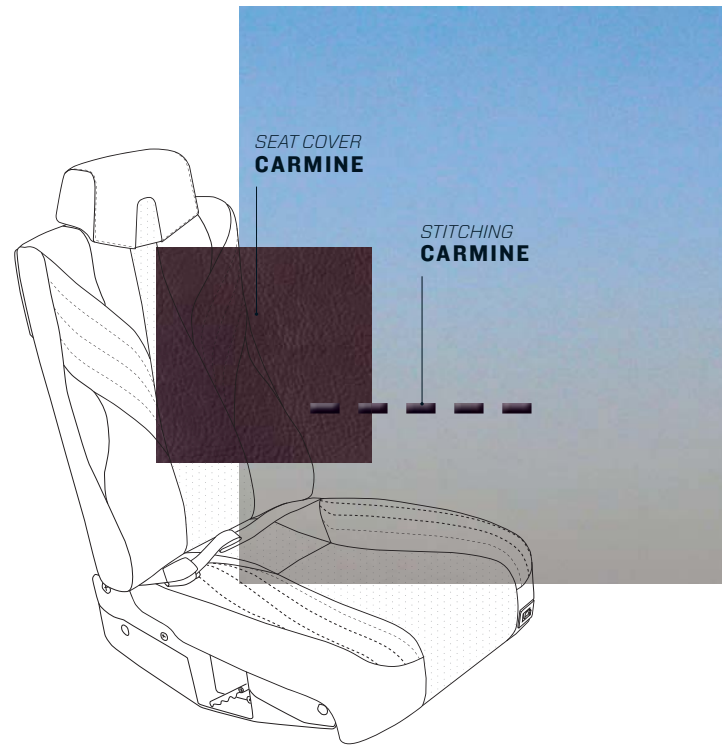
METAL FINISH
**BRUSHED
STAINLESS**



SEAT COVER
CARMINE

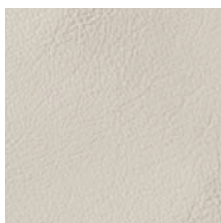
SUGGESTION 4

Seat cover: **CARMINE**
Folding table cover: **KOTO MAT**
Upper side panel: **LIGHT SAND**
Central overhead panel: **KOTO MAT**
Metal finish: **BRUSHED STAINLESS**
Lower side panel: **BEIGE GRAY**
Carpet: **LIGHT BROWN**
Stitching: **CARMINE**
Seatbelt: **CLARET**
Ultra-leather fairings: **CARMINE**



"THE WALLS OF JAIPUR STAND PROUD IN PINK, GUARDING THE CITY IN THEIR RUSTIC SHADE, SOFTENING THE HEAT WHEN SOL DOESN'T BLINK, AND THE COLD OF BITTERLY DRY WINTER DAYS. ANCIENT QUILAS AND MAHALS WITH LIFE STILL BREATHE, MORE THAN INANIMATE CONCRETE OR MERE BRICKS RED, A MOSAIC OF TRADITION THAT HERITAGE BEQUEATHS, INSCRIPTIONS OF CULTURE WHERE HISTORY TREADS."

NISHU MATHUR



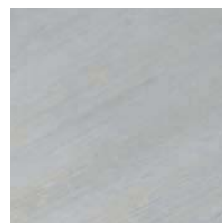
UPPER SIDE PANEL
LIGHT SAND



LOWER SIDE PANEL
BEIGE GRAY



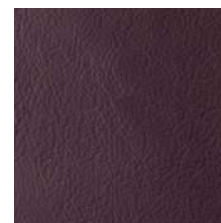
CARPET
LIGHT BROWN



CENTRAL OVERHEAD
KOTO MAT



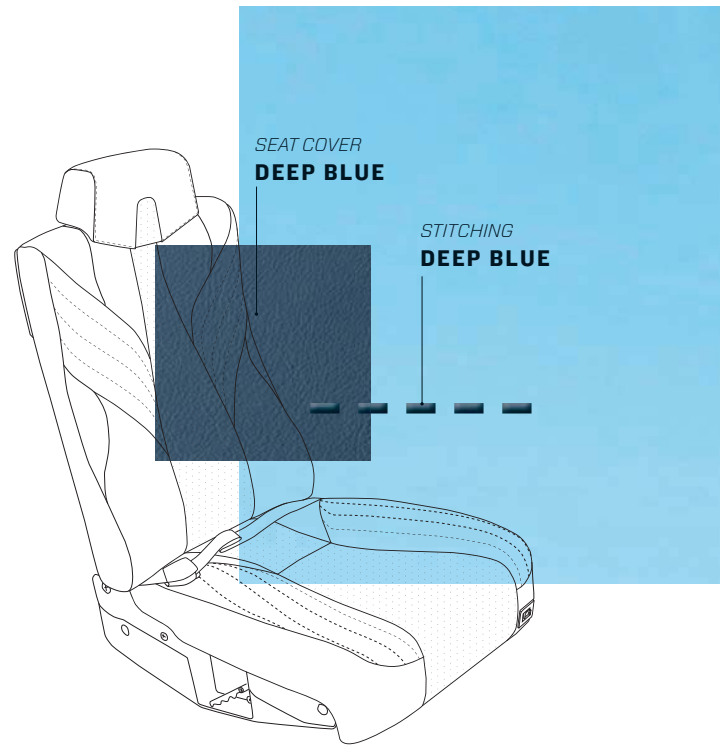
METAL FINISH
**BRUSHED
STAINLESS**



SEAT COVER
CARMINE

SUGGESTION 5

Seat cover: **DEEP BLUE**
Folding table cover: **CARBON**
Upper side panel: **WHITE SAND**
Central overhead panel: **CARBON**
Metal finish: **FLAT BLACK**
Lower side panel: **DEEP BLUE**
Carpet: **MIDNIGHT BLUE**
Stitching: **DEEP BLUE**
Seatbelt: **LEATHER BLUE**
Ultra-leather fairings: **DEEP BLUE**

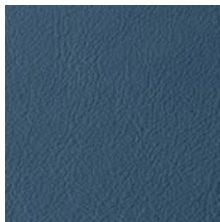


"BEND IF YOU CAN TO THE DARK SEA FORGETTING THE FLUTE'S SOUND ON NAKED FEET THAT TROD YOUR SLEEP IN THE OTHER, THE SUNKEN LIFE. WRITE IF YOU CAN ON YOUR LAST SHELL THE DAY THE PLACE THE NAME AND FLING IT INTO THE SEA SO THAT IT SINKS."

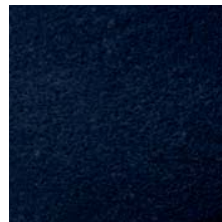
GEORGE SEFERIS



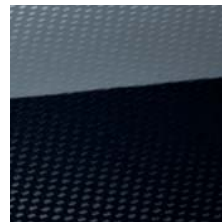
UPPER SIDE PANEL
WHITE SAND



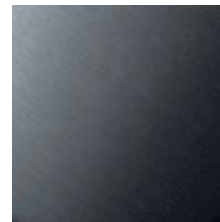
LOWER SIDE PANEL
DEEP BLUE



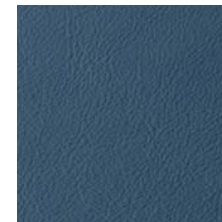
CARPET
MIDNIGHT BLUE



CENTRAL OVERHEAD
CARBON



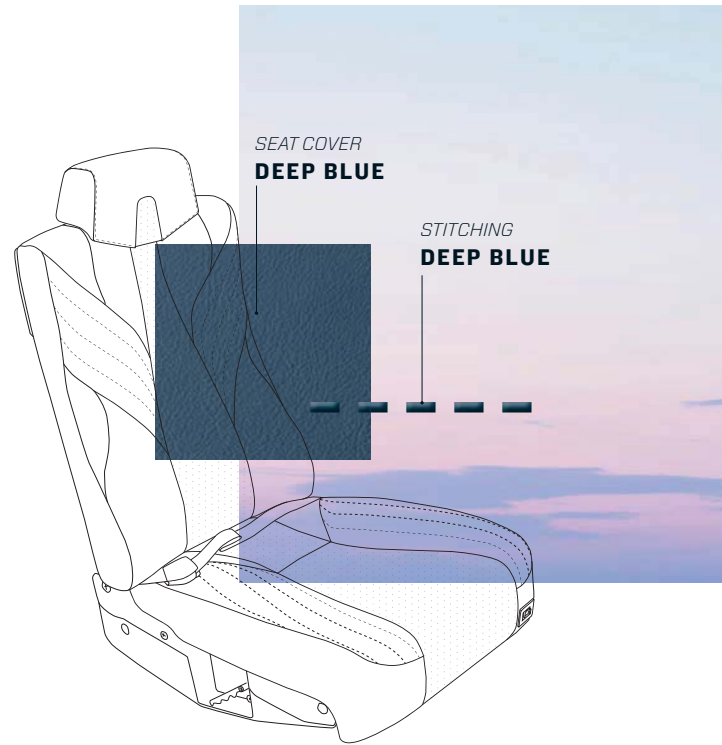
METAL FINISH
FLAT BLACK



SEAT COVER
DEEP BLUE

SUGGESTION 6

Seat cover: **DEEP BLUE**
Folding table cover: **GLOSSY WALNUT**
Upper side panel: **LIGHT SAND**
Central overhead panel: **GLOSSY WALNUT**
Metal finish: **GOLD**
Lower side panel: **HAVANA**
Carpet: **MIDNIGHT BLUE**
Stitching: **DEEP BLUE**
Seatbelt: **LEATHER BLUE**
Ultra-leather fairings: **DEEP BLUE**



"A COMPLEX SURROUND OF FIVE SIT 'ROUND AS SAN-TORINI SLEEPS LONG BEFORE STRONGYLE DROPPED FROM UNDER THE MINOAN'S FEET PYROCLASTICLY LOFTED A WAVE T'WARD CRETE BEFORE IT HAD TIME TO THINK NOW CALMLY RESTS THE COOL CALDERA WITH MYTHICAL ATLANTIS MYSTIQUE"

BRENT TERRY

Editorial team Jeff Lenorovitz
(The InfoWEST Group)

Photos credits Maxime Fourcade (p. 5, 7, 9, 11, 13, 15, 17, 19, 35, 37, 39, 41, 43, 45, 47) DR. (p. 4, 6, 8, 10, 12, 14, 16, 18, 20, 22, 24, 26, 28, 42, 44, 45), Airborne Films (p. 9, p. 11, p. 15, p. 19, p. 35, p. 37, p. 41) Jessica Ambats (p. 38) & DR

Graphic design Malherbe Paris, April 2019

This book is a non-contractual document and for information only. Daher reserves the right to revise all information presented in this document whenever occasioned by product improvements, government regulations or other good cause.



AIRPLANE BUSINESS UNIT

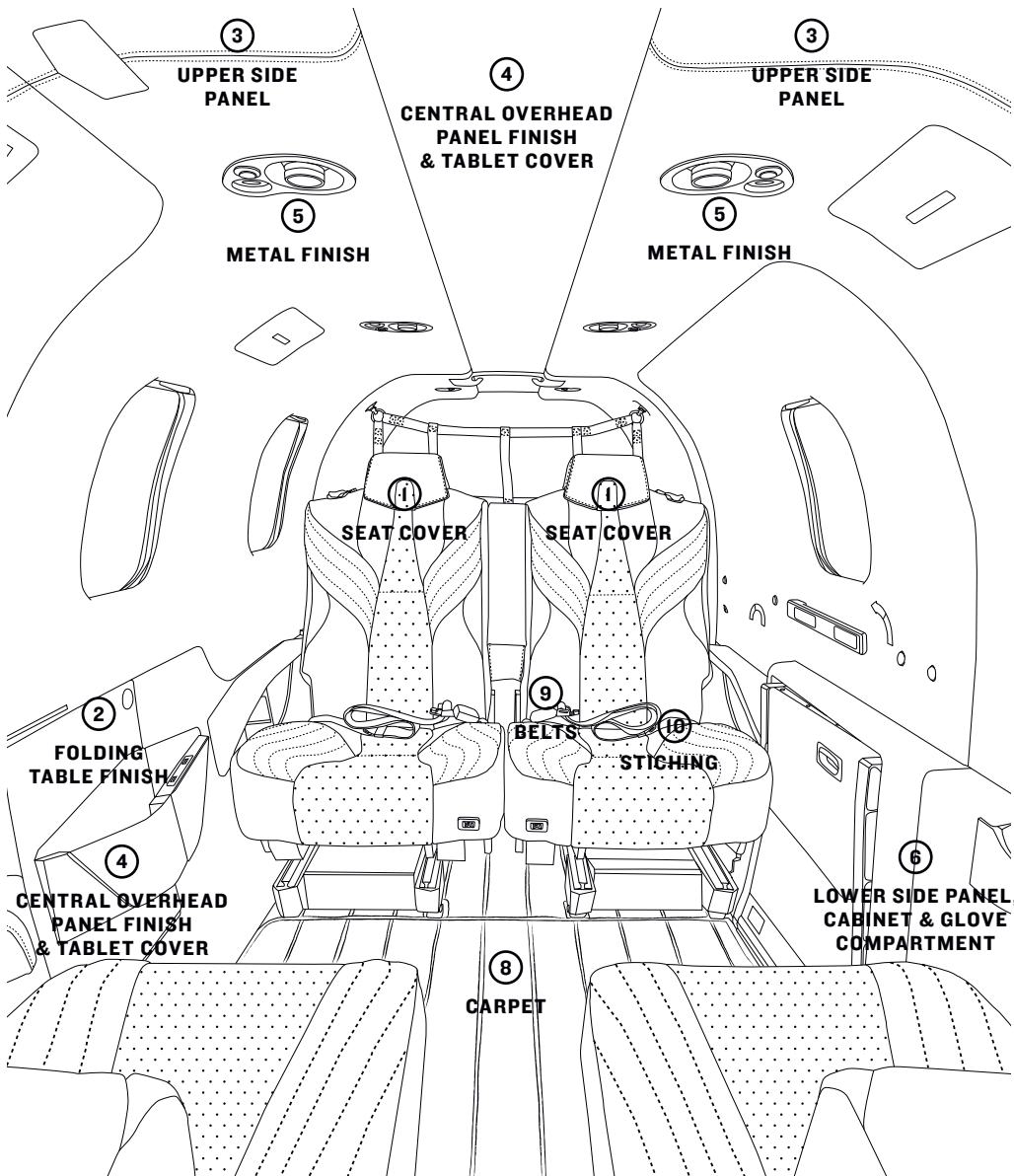
Sales & Marketing department
Aéroport de Tarbes-Lourdes-Pyrénées
65921 Tarbes Cedex 9 — France
Telephone: +33 (0)5 62 41 77 88
U.S. headquarters Sales & Marketing
department
601 NE 10th Street –
Pompano Beach, FL 33060 — USA
Telephone: +1 954-993-8477

www.tbm.aero

EXCLUSIVE HARMONY SELECTION

(AS PART OF THE ENHANCED OPERATIONAL PACKAGE)

YOUR REFERENCE	FACTORY REFERENCE
NAME: _____	DAHER REFERENCE : T700G2521000 _____
DATE: _____	AIRCRAFT SERIAL NUMBER : _____



PLEASE REFER TO INTERIORS BROCHURE 2020 FOR MORE INFORMATIONS.

EXCLUSIVE HARMONY SELECTION

BLACKFRIARS	LONDON	GOOSE BAY	LABRADOR
<input type="checkbox"/> 1. SEAT COVER BLACK EBONY	<input type="checkbox"/> 1. SEAT COVER BLACK EBONY	<input type="checkbox"/> 1. SEAT COVER TAUPE GRAY	<input type="checkbox"/> 1. SEAT COVER TAUPE GRAY
<input type="checkbox"/> 2. FOLDING TABLE FINISH CARBON	<input type="checkbox"/> 2. FOLDING TABLE FINISH CARBON	<input type="checkbox"/> 2. FOLDING TABLE FINISH SAPELLI MAT	<input type="checkbox"/> 2. FOLDING TABLE FINISH SAPELLI MAT
<input type="checkbox"/> 3. UPPER SIDE PANEL WHITE SAND	<input type="checkbox"/> 3. UPPER SIDE PANEL LIGHT SAND	<input type="checkbox"/> 3. UPPER SIDE PANEL WHITE SAND	<input type="checkbox"/> 3. UPPER SIDE PANEL WHITE SAND
<input type="checkbox"/> 4. CENTRAL OVERHEAD CARBON	<input type="checkbox"/> 4. CENTRAL OVERHEAD CARBON	<input type="checkbox"/> 4. CENTRAL OVERHEAD SAPELLI MAT	<input type="checkbox"/> 4. CENTRAL OVERHEAD SAPELLI MAT
<input type="checkbox"/> 5. METAL FINISH FLAT BLACK	<input type="checkbox"/> 5. METAL FINISH FLAT BLACK	<input type="checkbox"/> 5. METAL FINISH BRUSHED STAINLESS	<input type="checkbox"/> 5. METAL FINISH BRUSHED STAINLESS
<input type="checkbox"/> 6. LOWER SIDE PANEL BLACK EBONY	<input type="checkbox"/> 6. LOWER SIDE PANEL BEIGE GRAY	<input type="checkbox"/> 6. LOWER SIDE PANEL TAUPE GRAY	<input type="checkbox"/> 6. LOWER SIDE PANEL LIGHT SAND
<input type="checkbox"/> 8. CARPET CHARCOAL BLACK	<input type="checkbox"/> 8. CARPET CHARCOAL BLACK	<input type="checkbox"/> 8. CARPET TAUPE GRAY	<input type="checkbox"/> 8. CARPET TAUPE GRAY
<input type="checkbox"/> 9. SEATBELT BLACK JET	<input type="checkbox"/> 9. SEATBELT BLACK JET	<input type="checkbox"/> 9. SEATBELT CHROME GRAY	<input type="checkbox"/> 9. SEATBELT CHROME GRAY
ATACAMA	SAN PEDRO	OSLO	FJORD
<input type="checkbox"/> 1. SEAT COVER LIGHT SAND	<input type="checkbox"/> 1. SEAT COVER LIGHT SAND	<input type="checkbox"/> 1. SEAT COVER BEIGE GRAY	<input type="checkbox"/> 1. SEAT COVER BEIGE GRAY
<input type="checkbox"/> 2. FOLDING TABLE FINISH KOTO MAT	<input type="checkbox"/> 2. FOLDING TABLE FINISH GLOSSY WALNUT	<input type="checkbox"/> 2. FOLDING TABLE FINISH SAPELLI MAT	<input type="checkbox"/> 2. FOLDING TABLE FINISH CARBON
<input type="checkbox"/> 3. UPPER SIDE PANEL WHITE SAND	<input type="checkbox"/> 3. UPPER SIDE PANEL WHITE SAND	<input type="checkbox"/> 3. UPPER SIDE PANEL WHITE SAND	<input type="checkbox"/> 3. UPPER SIDE PANEL WHITE SAND
<input type="checkbox"/> 4. CENTRAL OVERHEAD KOTO MAT	<input type="checkbox"/> 4. CENTRAL OVERHEAD GLOSSY WALNUT	<input type="checkbox"/> 4. CENTRAL OVERHEAD SAPELLI MAT	<input type="checkbox"/> 4. CENTRAL OVERHEAD CARBON
<input type="checkbox"/> 5. METAL FINISH BRUSHED STAINLESS	<input type="checkbox"/> 5. METAL FINISH GOLD	<input type="checkbox"/> 5. METAL FINISH BRUSHED STAINLESS	<input type="checkbox"/> 5. METAL FINISH BRUSHED STAINLESS
<input type="checkbox"/> 6. LOWER SIDE PANEL LIGHT SAND	<input type="checkbox"/> 6. LOWER SIDE PANEL LIGHT BROWN	<input type="checkbox"/> 6. LOWER SIDE PANEL BEIGE GRAY	<input type="checkbox"/> 6. LOWER SIDE PANEL BLACK EBONY
<input type="checkbox"/> 8. CARPET LIGHT BROWN	<input type="checkbox"/> 8. CARPET LIGHT BROWN	<input type="checkbox"/> 8. CARPET LIGHT BROWN	<input type="checkbox"/> 8. CARPET CHARCOAL BLACK
<input type="checkbox"/> 9. SEATBELT SOFT MOON	<input type="checkbox"/> 9. SEATBELT SOFT MOON	<input type="checkbox"/> 9. SEATBELT OATMEAL	<input type="checkbox"/> 9. SEATBELT OATMEAL

MATCHING STITCHING FOR EACH EXCLUSIVE HARMONY



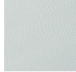

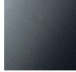

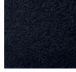

PREMIUM CUSTOMIZATION (on page 3)

OPTIONS





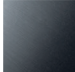



<input type="checkbox"/> CENTRAL UPPER PANEL (4), TABLE COVER AND IPAD STORAGE ACCORDING TO TABLE FINISH (DE LUXE WOOD OR CARBON TRIM INTERIOR PACKAGE) for an additional \$8,600	<input type="checkbox"/> PRIVACY COMPARTMENT INCLUDING CHEMICAL TOILET AND ELECTRIC SELF DEPLOYING DOOR (SAME COLOR AS SEAT SELECTION) for an additional \$37,635	<input type="checkbox"/> PILOT AND COPILOT AIRBAGS SEATS AND BELT Price: \$7,900
7. STORAGE CABINET LEFT	7. STORAGE CABINET RIGHT	
<input type="checkbox"/> NO STORAGE <input type="checkbox"/> LOWER STORAGE for additional \$4,910 <input type="checkbox"/> TOP STORAGE for additional \$4,910	<input type="checkbox"/> ONE PILOT CASE SUPPORT for additional \$3,450 <input type="checkbox"/> EXTENDED LARGE STORAGE CABINET* for additional \$9,950 <input type="checkbox"/> EXTENDED LARGE STORAGE CABINET* electric version Add \$13,950	<input type="checkbox"/> NO STORAGE <input type="checkbox"/> LOWER STORAGE for additional \$4,910 <input type="checkbox"/> TOP STORAGE for additional \$4,910 <input type="checkbox"/> ONE PILOT CASE SUPPORT for additional \$3,450

*If you choose this option, you can't add the lower and/or the top storage cabinet on this side



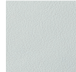


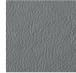


BLACKFRIARS

-  1. SEAT COVER
BLACK EBONY
-  2. FOLDING TABLE FINISH
CARBON
-  3. UPPER SIDE PANEL
WHITE SAND
-  4. CENTRAL OVERHEAD
CARBON
-  5. METAL FINISH
FLAT BLACK
-  6. LOWER SIDE PANEL
BLACK EBONY
-  8. CARPET
CHARCOAL BLACK
-  9. SEATBELT
BLACK JET

LONDON

-  1. SEAT COVER
BLACK EBONY
-  2. FOLDING TABLE FINISH
CARBON
-  3. UPPER SIDE PANEL
LIGHT SAND
-  4. CENTRAL OVERHEAD
CARBON
-  5. METAL FINISH
FLAT BLACK
-  6. LOWER SIDE PANEL
BEIGE GRAY
-  8. CARPET
CHARCOAL BLACK
-  9. SEATBELT
BLACK JET




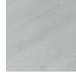




GOOSE BAY

-  1. SEAT COVER
TAUPE GRAY
-  2. FOLDING TABLE FINISH
SAPELLI MAT
-  3. UPPER SIDE PANEL
WHITE SAND
-  4. CENTRAL OVERHEAD
SAPELLI MAT
-  5. METAL FINISH
BRUSHED STAINLESS
-  6. LOWER SIDE PANEL
TAUPE GRAY
-  8. CARPET
TAUPE GRAY
-  9. SEATBELT
CHROME GRAY




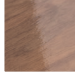
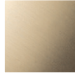



LABRADOR

-  1. SEAT COVER
TAUPE GRAY
-  2. FOLDING TABLE FINISH
SAPELLI MAT
-  3. UPPER SIDE PANEL
WHITE SAND
-  4. CENTRAL OVERHEAD
SAPELLI MAT
-  5. METAL FINISH
BRUSHED STAINLESS
-  6. LOWER SIDE PANEL
LIGHT SAND
-  8. CARPET
TAUPE GRAY
-  9. SEATBELT
CHROME GRAY


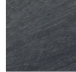


ATACAMA

-  1. SEAT COVER
LIGHT SAND
-  2. FOLDING TABLE FINISH
KOTO MAT
-  3. UPPER SIDE PANEL
WHITE SAND
-  4. CENTRAL OVERHEAD
KOTO MAT
-  5. METAL FINISH
BRUSHED STAINLESS
-  6. LOWER SIDE PANEL
LIGHT SAND
-  8. CARPET
LIGHT BROWN
-  9. SEATBELT
SOFT MOON



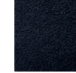

SAN PEDRO

-  1. SEAT COVER
LIGHT SAND
-  2. FOLDING TABLE FINISH
GLOSSY WALNUT
-  3. UPPER SIDE PANEL
WHITE SAND
-  4. CENTRAL OVERHEAD
GLOSSY WALNUT
-  5. METAL FINISH
GOLD
-  6. LOWER SIDE PANEL
LIGHT BROWN
-  8. CARPET
LIGHT BROWN
-  9. SEATBELT
SOFT MOON

OSLO

-  1. SEAT COVER
BEIGE GRAY
-  2. FOLDING TABLE FINISH
SAPELLI MAT
-  3. UPPER SIDE PANEL
WHITE SAND
-  4. CENTRAL OVERHEAD
SAPELLI MAT
-  5. METAL FINISH
BRUSHED STAINLESS
-  6. LOWER SIDE PANEL
BEIGE GRAY
-  8. CARPET
LIGHT BROWN
-  9. SEATBELT
OATMEAL

FJORD

-  1. SEAT COVER
BEIGE GRAY
-  2. FOLDING TABLE FINISH
CARBON
-  3. UPPER SIDE PANEL
WHITE SAND
-  4. CENTRAL OVERHEAD
CARBON
-  5. METAL FINISH
BRUSHED STAINLESS
-  6. LOWER SIDE PANEL
BLACK EBONY
-  8. CARPET
CHARCOAL BLACK
-  9. SEATBELT
OATMEAL

YOUR REFERENCE

NAME: _____
DATE: _____

FACTORY REFERENCE

DAHER REFERENCE : T700G2521000 _____
AIRCRAFT SERIAL NUMBER : _____

1 SEATS

- WHITE SAND
- LIGHT SAND
- BEIGE GRAY
- TAUPE GRAY
- LIGHT BROWN
- BLACK EBONY

2 TABLE FINISH

- GLOSSY WALNUT
- KOTO MAT
- SAPELLI MAT
- CARBON

3 UPPER SIDE PANEL AND CENTRAL OVERHEAD PANEL

- WHITE SAND
- LIGHT SAND
- BEIGE GRAY
- TAUPE GRAY
- LIGHT BROWN
- BLACK EBONY

4 CENTRAL OVERHEAD

- GLOSSY WALNUT
- KOTO MAT
- SAPELLI MAT
- CARBON

5 METAL FINISH

- FLAT BLACK
- BRUSHED STAINLESS
- GOLD

6 LOWER SIDE PANEL, CABINETS AND GLOVE COMPARTMENT

- WHITE SAND
- LIGHT SAND
- BEIGE GRAY
- TAUPE GRAY
- LIGHT BROWN
- BLACK EBONY

8 CARPET

- CHARCOAL BLACK
- TAUPE GRAY
- LIGHT BROWN

9 SEATBELT

- SOFT MOON
- OATMEAL
- CHROME GRAY
- BLACK JET

10 STITCHING

- BLACK EBONY
- TAUPE GRAY
- LIGHT SAND
- BEIGE GRAY

YOUR COLOR: _____

OPTIONS

- CENTRAL UPPER PANEL (4), TABLE COVER AND IPAD STORAGE ACCORDING TO TABLE FINISH (DE LUXE WOOD OR CARBON TRIM INTERIOR PACKAGE) for an additional \$8,600
- PRIVACY COMPARTMENT INCLUDING CHEMICAL TOILET AND ELECTRIC SELF DEPLOYING DOOR (SAME COLOR AS SEAT SELECTION) for an additional \$37,635
- PILOT AND COPILOT AIRBAGS SEATS AND BELT for an additional \$7,900

7. STORAGE CABINET
LEFT

- NO STORAGE
- LOWER STORAGE for additional \$4,910
- TOP STORAGE for additional \$4,910
- ONE PILOT CASE SUPPORT for additional \$3,450
- EXTENDED LARGE STORAGE CABINET* for additional \$9,950
- EXTENDED LARGE STORAGE CABINET* electric version Add \$13,950

7. STORAGE CABINET
RIGHT

- NO STORAGE
- LOWER STORAGE for additional \$4,910
- ONE PILOT CASE SUPPORT for additional \$3,450
- TOP STORAGE for additional \$4,910

REMARKS

PLEASE REFER TO TBM INTERIORS GUIDE 2020 (PAGE 28-29) FOR MORE INFORMATIONS.

*If you choose this option, you can't add the lower and/or the top storage cabinet on this side

FEELING CREATIVE? THROUGH A \$10,000 OPTION AND 10 WEEKS LEAD TIME, YOU HAVE ACCESS TO AN EXTENDED COLOR PALETTE WITH 40 ADDITIONAL LEATHER SHADES AND STICING TO CREATE A UNIQUE INTERIOR.

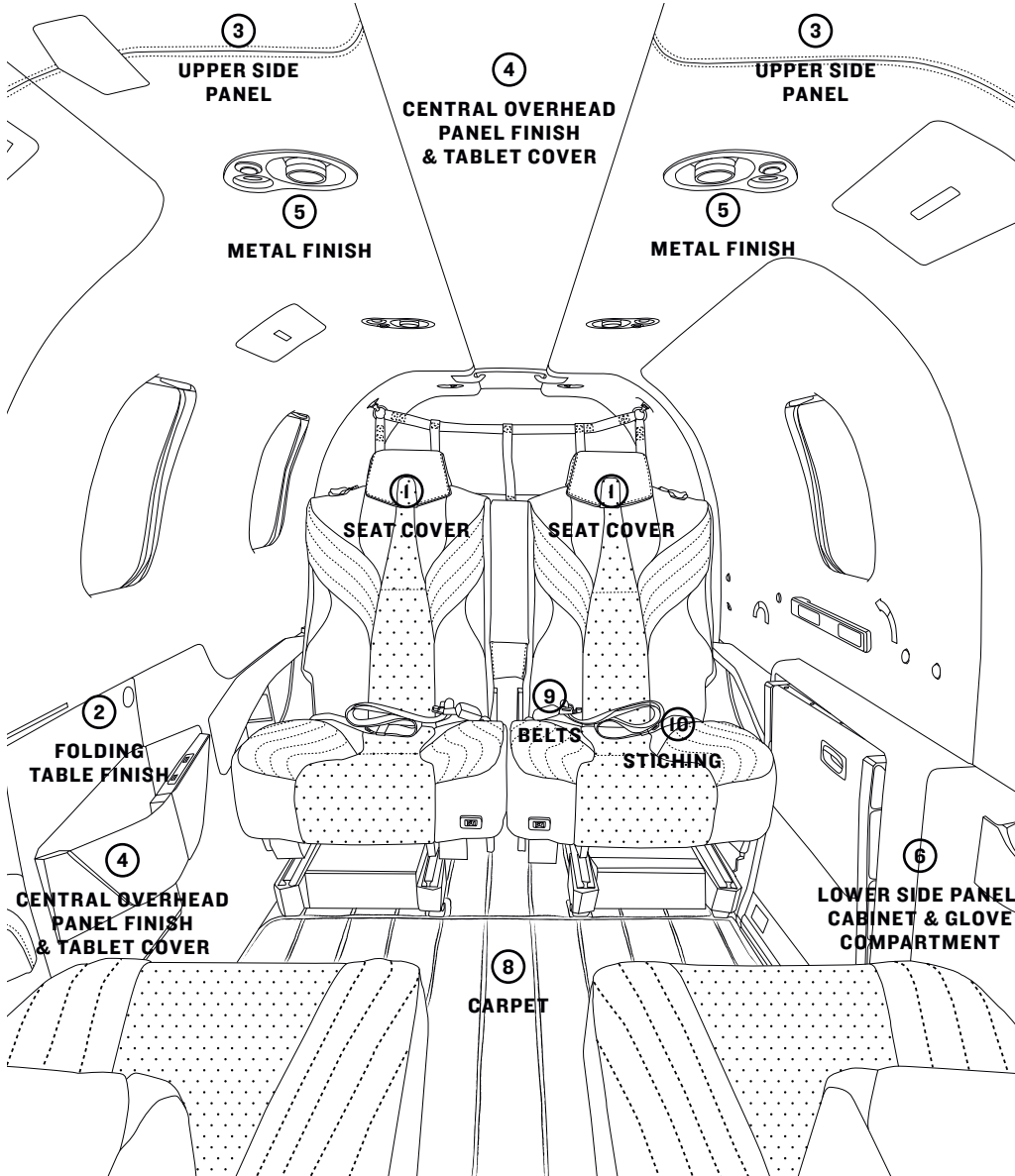
DO IT YOURSELF CUSTOMIZATION

YOUR REFERENCE

NAME: _____
DATE: _____

FACTORY REFERENCE

DAHER REFERENCE : T700G2521000 _____
AIRCRAFT SERIAL NUMBER : _____



PLEASE REFER TO INTERIORS BROCHURE 2020 FOR MORE INFORMATIONS.

1 SEATS

2 TABLE FINISH

3 UPPER SIDE PANEL AND CENTRAL OVERHEAD PANEL

4 CENTRAL OVERHEAD

5 METAL FINISH

6 LOWER SIDE PANEL, CABINETS AND GLOVE COMPARTMENT

8 CARPET

9 SEATBELT

10 STICING

YOUR COLOR: _____

OPTIONS

CENTRAL UPPER PANEL (4), TABLE COVER AND IPAD STORAGE ACCORDING TO TABLE FINISH (DE LUXE WOOD OR CARBON TRIM INTERIOR PACKAGE) - Price \$8,600

PRIVACY COMPARTMENT INCLUDING CHEMICAL TOILET AND ELECTRIC SELF DEPLOYING DOOR (SAME COLOR AS SEAT SELECTION) for an additional \$37,635

PILOT AND COPILOT AIRBAGS SEATS AND BELT for an additional \$7,900

7 STORAGE CABINET LEFT	7 STORAGE CABINET RIGHT
<input type="checkbox"/> NO STORAGE	<input type="checkbox"/> NO STORAGE
<input type="checkbox"/> LOWER STORAGE for additional \$4,910	<input type="checkbox"/> LOWER STORAGE for additional \$4,910
<input type="checkbox"/> TOP STORAGE for additional \$4,910	<input type="checkbox"/> ONE PILOT CASE SUPPORT for additional \$3,450
<input type="checkbox"/> ONE PILOT CASE SUPPORT for additional \$3,450	<input type="checkbox"/> TOP STORAGE for additional \$4,910
<input type="checkbox"/> EXTENDED LARGE STORAGE CABINET* for additional \$9,950	
<input type="checkbox"/> EXTENDED LARGE STORAGE CABINET* electric version Add \$13,950	

*if you choose this option, you can't add the lower and/or the top storage cabinet on this side

PLEASE REFER TO TBM INTERIORS GUIDE 2020 (PAGE 32-42) FOR MORE INFORMATIONS.

REMARKS